

RUGBY
SOUTHEAST

RUGBY®

Architectural Building Products



CATALOG

ARCHITECTURAL SPECIALTY PRODUCTS
DECORATIVE SURFACING
ARCHITECTURAL MILLWORK
CABINET HARDWARE AND ADHESIVES

RUGBY®

Architectural Building Products



America's Leading Distributor

of Architectural Wood Products, Decorative Surfacing,
Architectural Millwork and Hardware located in 28 major
US cities, servicing 35 states

WHY MAKE RUGBY YOUR SUPPLIER?

Rugby is Proven Reliability. Rugby is committed to fulfilling its promise to supply high quality products, competitively priced and delivered in a timely manner by industry professionals who know the value of exceptional service.

FRONT COVER IMAGE:

Product: Staron
Project: Samsung Human Resources Development Institute



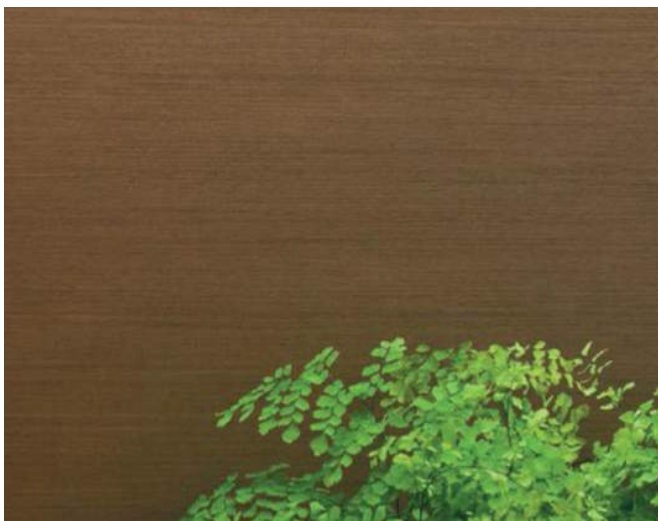
C O N T E N T S

PAGE	1.	2.	3.	4.	5.
	Laminates: Formica	Laminate Countertops: VT Industries	Acrylic Solid Surface: Staron	Veneers and Edgebanding: Veneer Tech	Hardwood Plywood: Columbia FP
PAGE	6.	7.	8.	9.	10.
	Architectural Decor: Echo Wood	Architectural Decor: Shinnoki	Architectural Decor: Querkus	Architectural Decor: Nordus	Hardwood Plywood: Timber Products
PAGE	11.	12.	13.	14.	15.
	Hardwood Plywood: Baltic Birch and Drawersides	Adhesives: Titebond and Choice Brands	Particle Board: Arauco and Roseburg	PVC Edgebanding: Doellken	Drawer Blanks: BHK of America
PAGE	16.	17.	18.	19.	
	Hardware: Rev-A-Shelf	Hardware: Salice and Knappe & Vogt	Hardwood Lumber	Hardwood Lumber	



The mark of responsible forestry

Look for
FSC® Certified
Products



For architects and designers who feel decor needs to be about more than just “looking good”... Formica Group provides the surfaces that fuse beautiful design with purposeful functionality. Formica® Products provide versatile surfacing solutions that are inspired by and adapt to the way people live, work and play.

Today's laminates come in vibrant upbeat hues, nature-inspired tones and well-chosen neutrals that go with everything, including modest budgets. Mix and match solids, woodgrains, graphic patterns or stone looks to achieve your project goals.

Our innovative Formica® EliteForm surfacing technology redefines the performance attributes of high-pressure laminate to deliver a more durable laminate for today's market. Formica® Laminate with EliteForm features superior scratch resistance over other laminate brands, the ability to postform to a smaller radius with better blister resistance, and more durable, long-lasting surfaces, including the Gloss finish in horizontal applications.

Our Product Lines also include:

- MicroDot™ and Sculpted™ Collections, Premiumfx™ finish collection, 180fx®, Formica Infiniti™, ColorCore2™, Formica Envision™, Formica® Compact™, DecoMetal® and Chemtop2™

/ OPEN /



National Product
Guide

/ OPEN /



Surface Styles
Guide



In addition to vanities, VT Industries is a leading manufacturer of countertops, offering homeowners dynamic options, including granite, VT TruQuartz,™ VT Dimensions,® and VT VersaTop™. We also offer a variety of distinctive edge profiles designed to bring custom style to any kitchen, bath, or bar project.

VT Dimensions® countertops bring everything together in one seamless offering—from the slab-like core, to the naturally beautiful surface, to the premium edge profiles.

- State-of-the-art manufacturing assures your satisfaction every time
- 45-lb. industrial particle board as standard (meets HUD and government specs; ANSI approved)
- EQcountertops are FSC® certified to originate from responsibly managed forests
- GREENGUARD Gold Certified for low chemical emissions
- PVA glue line provides strongest possible bond between particle board and laminate

/ OPEN /



VT GeoScapes
Brochure

/ OPEN /



VT Dimensions
Brochure





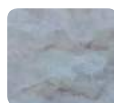
4 of the 90 Colors Stocked by Rugby



Cloudbank



Loam



Ocean View



Presto

staron®

100% Acrylic Solid Surface

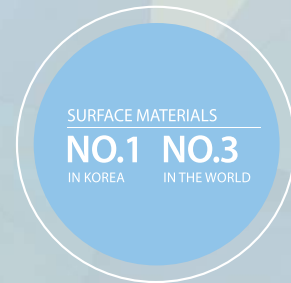
Staron high-performance acrylic solid surface is known for excellent workability and easy maintenance. Its homogenous, color-through composition is non-porous and ultra-hygienic, making Staron an ideal surfacing option for a wide range of commercial interior applications and residential spaces.

- 10-year limited commercial warranty
- Ultra hygienic / non-porous
- Thermo-formable
- 90 design inspired color options available
- Integrated sinks and bowls available. All ADA compliant
- Sample sets of Staron are available along with individual color samples

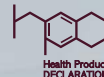
/ OPEN /



Brochure



Sample Binder Available





Most Domestic and Many Exotic Species Available




Veneer Tech

Veneer Technologies Incorporated

Premium Hardwood Sheet Veneer & Edgebanding

Veneer Technologies, Inc. manufactures high end decorative hardwood veneer faces. They carry most domestic species and have access to many exotic species from around the world. They currently operate ten continuous cross feed splicers, producing approximately 6.5 million finished square feet of face veneer per month.

/ OPEN /



Brochure

SHEET VENEER

Manufactured with a select grade face veneer crosslinked to a variety of backers. Backers include 10 mil, 20 mil, 2-ply with cross-grain back, 3M peel-n-stick, polyback, true phenolic. Sizes are 4' x 8', 4' x 10', 4' x 12'. Custom sizes available.

WOOD EDGEBOARDING

- Standard wood edgebanding
- 500' rolls, fleeced and sanded
- 250' rolls, preglued EVA hotmelt
- UV prefinished, preglued or fleece backed
- Widths 1/2" to 2"
- Custom widths and lengths available

MELAMINE EDGEBOARDING

- Standard colors
- 250' rolls
- Preglued

THICK WOOD EDGE ROLLS

- 328' rolls. Thickness 1mm, 1.5mm, 2mm, and 3mm

Please inquire about available widths and species

columbia

FOREST PRODUCTS™

Founded in 1957, Columbia Forest Products is North America's largest manufacturer of hardwood plywood and hardwood veneer products. Columbia's decorative interior veneers and panels are used in high-end cabinetry, fine furniture, architectural millwork and commercial fixtures.

- Species: Various
- Face grades: A,B,C,D,E
- Back grades: 1,2,3,4
- Sizes: 4x6, 4x7, 4x8, 4x10, 5x8, 8x4
- Thickness: 1/8" to 1-1/4"
- Core types: JayCore®, KayCore®, veneer core, particleboard core (PBC), medium density fibercore (MDF), combination core, Classic Core®, lumber core
- UV Capabilities
- FSC® options available



Edgebanding

/ OPEN /



Brochure

PUREBOND
PLYWOOD

/ OPEN /



Brochure

APPALACHIAN
TRADITIONS

/ OPEN /



Brochure

GRADING
GUIDE





The mark of responsible forestry



4 of the 17 Colors Stocked by Rugby



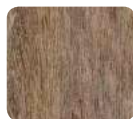
Malibu



Monterey



Napa



Santa Monica

EchoWood®

RECONSTITUTED WOOD VENEERS

- High quality, reconstituted, real wood veneer
- 19 popular patterns
- 0.6mm and 2.0mm matching edgebanding
- Veneer sheets or custom panel lay up
- Subject to volume and lead time, an infinite array of custom colors and patterns available
- NAUF, NAF options
- FSC® options available

/ OPEN /



Brochure



Edgebanding



A&D Binder



Fan & Prefinished Sets



SHINNOKI®

prefinished wood panels

Shinnoki offers prefinished wood veneered panels for architects and cabinet makers to design and create stylish and distinctive interiors. Unlike regular veneered panels, Shinnoki products are ready-to-use and as easy to work with as a melamine board, huge time and cost-saving but with the same unique look and feel that is typical for real wood veneer.

- Prefinished wood panels – 10% sheen matte finish
- Mix match technique to give natural appearance of solid wood
- Unique Designs created by a team of top European Designers
- Protective peel coat to protect finish
- 19mm 48.8” x 109.8” NAF MDF – 2 sided
- Prefinished 0.6mm edgeband and 1mm ABS edgeband available

/ OPEN /



Brochure



Edgebanding



9 of the 17 Colors Stocked by Rugby



QUERKUS

finest oak collection

Textured European White Oak & Reclaimed Panels

- Wire brushed & patented “saw effect” scratching
- Mixmatch technique to give natural appearance of solid wood
- Thick cut veneer for deep brushing and scratching
- European white oak – matched for color consistency
- Reclaimed veneer from railways in Europe
- 20mm 48.8” x 98.4” on MDF
- 0.8mm and 1mm edgeband available, brushed and scratched



3 of the 14 Colors Stocked by Rugby



Allegro



Baltimore



Harlem

/ OPEN /



Brochure



Edgebanding



Sample Binder
Available



Nørdus

the scandinavian collection

Contemporary Softwood Panels

For the 'Nørdus' collection, only the best softwood and birchwood is collected and carefully processed into finely cut veneer. This way, the raw materials are optimized. Advanced surface treatments reinforce the unique beauty of wood and highlight its 3D aspect. A team of trend watchers suggested various trendy finishing options such as metallic shades, ash grey or neutral white accents allowing 'Nørdus' to be integrated in every interior.

- Advanced surface treatments highlight 3D aspect
- Unfinished panels are easily customized to cover broad color palette range
- Scandinavian influence easily integrated into modern design
- Mixmatch technique to give natural appearance of solid wood
- 19mm x 4' x 9' G2S Panels
- Matching .6mm thick edgebanding
- Matching 4' x 9' flexible veneer

/ OPEN /



Brochure



Edgebanding



Sample Binder Available

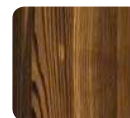


Flex Veneer

A Nørdus panel is composed of a top layer of real wood veneer, a core of 18 mm MDF and a backing of real wood veneer for stability reasons. The top layer is always jointed veneer sheet in accordance with the chosen design, composed using our mix match technique.



Available Colors



Larch – Autumn



Larch – Winter



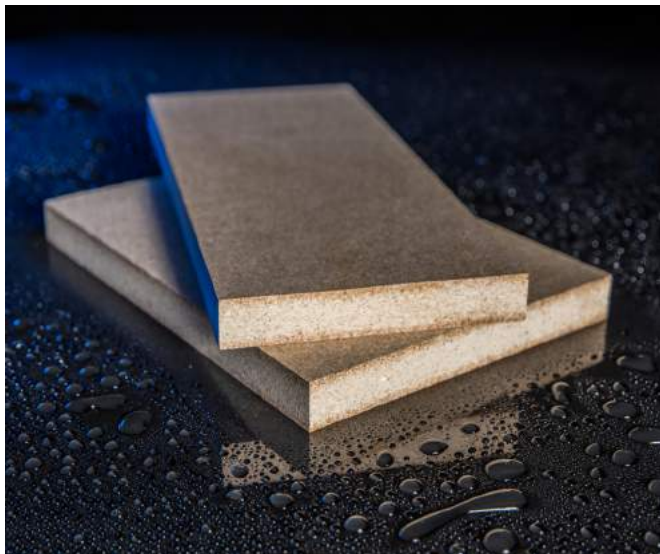
Larch – Spring



Spruce – Clean



Pine – Wild



Timber Products Company

THE TREMENDOUS RESOURCE®



- 3/8" up to 1-1/2" on standard panels
- 5' x 24' 20 opening press
- NAF, CARB Exempt
- MR10, MR50, and FR panels available
- ECC and SCS Certified Composite Panels
- Cal Green compliant
- Ampine NAF panels – Ampine NAF Industrial, Commercial, UnderLayment, Counter Top, Shelving
- Encore NAF panels – Encore, Encore FR, Encore MR 50, Encore HD, Encore Select, Encore Counter Top
- APEX NAF panels – APEX, APEX MR50, APEX FR, APEX Shelving
- All Encore and APEX panels carry a minimum of an MR10 moisture rating other than the Encore FR, and APEX FR
- Custom Cut To Size Program
- FSC® options available

/ OPEN /



Brochure



Edgebanding

BALTIC BIRCH®

HARDWOOD PLYWOOD

- Direct importer - more choices and better quality control
- Production quality supervised by Hardwoods employees in Russia
- 3.0mm through 25.0mm
- 5' x 5', 4' x 8', 10' x 4' and 8' x 4' cross grain
- Grades ranging from C/C through B/B
- NAUF, Exterior, and Clear Finished
- Custom sizes and grades available
- Laminating blanks
- FSC® options available

/ OPEN /



Brochure



BALTIC BIRCH®

DRAWERSIDES

- Prefinished or Unfinished
- Lengths 5' and 8' or precision trim available
- Thicknesses: 9, 12, 15, 18 mm
- Dado can be ordered to customer spec

/ OPEN /



Brochure



Rugby is a full line distributor of all Titebond & Franklin products. Titebond I, II & III Wood Glue, Color matched caulking, Heavy Duty Construction Adhesive, Fast Set Polyurethane Construction Adhesive, FRP Solvent Free Adhesive, Weather Master Sealants, Ultimate MP, Silicones.



/ OPEN /



Brochure



Choice Brands Adhesives started in 2010 to provide industrial adhesives to a wide variety of markets and applications. Our company was founded by experienced adhesive veterans formerly with Imperial Adhesives / Sovereign Adhesives / Henkel Adhesives.

/ OPEN /



Current Catalog

We serve a wide variety of markets:

Cabinets and Millwork, Countertops, Office Furniture, Case Goods, Panel Lamination, Furniture, Foam Fabricating, Bedding, Sporting Goods, Commercial Roofing, Insulation, Waterproofing, Marine, Recreational Vehicle, Automotive Aftermarket

arauco

- 1/2" - 1-1/8" thick, 4', 5' and 6' wide
- Cut to size and countertop sizes
- CARB2, ULEF, NAF, FSC® Certified
- Available in Water resistant, Fire rated and FSC® certified
- Products include Duraflake, Vesta, Terra

/ OPEN /



Brochure



Roseburg

A Forest Products Company

Roseburg produces one of the most popular machinable particleboard panels on the market today. Our UltraBlend panels are a premium-quality, mat-formed, multilayer wood particle board. These panels are made predominantly of precision-refined wood particles that are bonded with thermosetting resins.

UltraBlend features a highly refined smooth surface and tight uniform core with machinable edges and excellent dimensional stability. UltraBlend particleboard panels are designed for the demanding laminating and edge machining applications of today's precision woodworking industry.

/ OPEN /



Brochure





DOELLKEN

PVC EDGE BANDING

Doellken PVC Edgebanding is the finest, most consistent product available on the market today. Typical applications of PVC Edgebanding include residential and office furniture, institutional casegoods (laboratories, hospitals, medical offices, schools, etc.), store fixtures, kitchens, locker rooms and numerous others. Doellken Edgebanding comes in thicknesses of .018" (0.45 mm) to 3 mm and widths ranging from 5/8" (16mm) to 2-3/16" (55mm).

- The SpecLine and DoellkenFlex program are available from stock in 5 different sizes
- All edgebanding products are available in solid colors, designer patterns and woodgrains
- With 11 different embosses, your edgebands will have a natural appearance and a deep emboss feel

/ OPEN /



Brochure



BHK knows that selecting a drawer manufacturer is a major decision. You want to make sure you get the quality your project demands, the price that affords you a profit and the service you deserve. BHK of America has manufactured quality drawer systems for more than 30 years and has built its success on service, value and superior craftsmanship.

To maximize the functionality of your drawer space BHK offers multiple storage and convenience options. In order to build the highest quality wood drawers, you have to start with the finest quality materials. For that, BHK select from the most beautiful domestic species including Maple, Tilia, Cherry and Red Oak.

- Tilia bottom thickness - 1/4", Bottom Thickness for Maple, Cherry & Red Oak is 3/8"
- Custom Heights Ranging from 1 1/2" to 15"
- English Dovetail Construction
- 3/8" Bottoms made from VC Plywood
- Durable Clear Satin Finish is Standard (Unfinished or staining available upon request)
- Standard Eased Top Edge (Straight top edge available upon request)
- Front Drilling
- White Vinyl Wrapped
- Baltic Birch



/ OPEN /

/ OPEN /



Brochure



Brochure

CHOOSE FROM A LARGE VARIETY OF BHK BLANK OPTIONS

4 CUTS ► ADD BOTTOM ► ASSEMBLE ► DONE



REV-A-SHELF

Rev-A-Shelf was established in 1978 as a division of Jones Plastics and Engineering, a family owned injection molder of appliances parts, and other custom polymer components (ISO 9002 Certified) with five manufacturing facilities in Kentucky, Tennessee, and Monterrey, Mexico.

Our Product line began as metal and polymer Lazy Susan components manufactured for the largest U.S. cabinet manufacturers and has grown into the market leading innovator of quality, functional residential cabinet storage and organizational products such as Lazy Susans, Kitchen Drawer Organizers, Base Cabinet and Pantry Pull-Outs, functional Waste Containers, LED lighting systems and Childproof Locking System. Our worldwide presence extends from the U.S. to Europe, Asia, and Mexico, with factories, warehouses and satellite offices strategically located to serve an expanding customer base of kitchen dealers, architects, furniture manufactures, cabinet industry distributors and retail home centers worldwide.

/ OPEN /



Current Catalog

/ OPEN /



TRESCO
Buyers Guide

tresco
lighting

SALICE

Established in 1989, Salice America reflects the leadership claimed by the European parent company for over 50 years.

A complete product line of concealed hinges, drawer slides and sliding door systems has made our company the technology leader of the market, a never ending task requiring solid engineering and innovative mentality.

/ OPEN /  Current Catalog	/ OPEN /  Runners and Drawers Catalog	/ OPEN /  Kitchen Space Organizers
/ OPEN /  Futura Runner System	/ OPEN /  Silentia Door Hardware	/ OPEN /  Silentia Face Frame



KNAPE & VOGT®

Knappe & Vogt design and manufacture precision, Euro-style and utility slide systems; wall-attached shelving for commercial, home and garage applications; kitchen, closet and bath storage; office and healthcare ergonomics products and specialty hardware. We offer these products under several well-known brand names: KV®, KV Waterloo®, HyLoft®, Real Solutions for Real Life®, John Sterling™ and Shelf-Made®.

/ OPEN /


 Current Catalog



For every type of movement... the answer is Salice. A comprehensive range of products that combines excellence in research-based design and technical expertise to provide solutions for every domestic furniture application.

- 1 - Hinges and mounting plates
- 2 - Lifting systems
- 3 - Sliding systems
- 4 - Runners
- 5 - Drawers

SALICE





DOMESTIC SPECIES: HARDWOOD

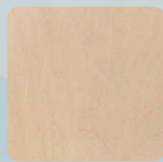
- 4/4 through 16/4. All lengths and grades
- S2S, SL1E and ripping available
- Width sorted Red Oak, Hard Maple, and Poplar
- S4S, Sanding and Custom millwork packages including custom knife grinding available



Alder



Ash



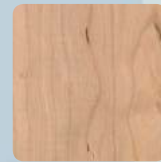
Basswood



Birch



Cherry



Hickory



Maple
Birdseye



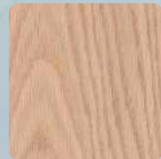
Maple
Curly Soft



Maple
Hard



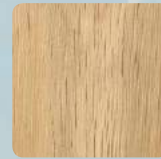
Maple
Soft



Oak White,
Rift & QTR



Oak White



Oak - Red,
Rift & QTR



Oak Red



Poplar



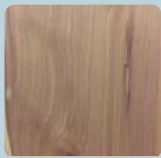
Walnut



DOMESTIC SOFTWOOD AND IMPORTED SPECIES

A comprehensive assortment of Domestic and Imported Options

DOMESTIC SPECIES: SOFTWOOD



Cedar /
Aromatic



Cedar /
Western Red CVG



Fir /
Vertical Grain



Southern
Yellow Pine



Cypress



White Pine /
Eastern Knotty

IMPORTED SPECIES

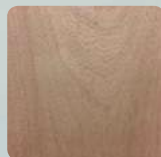
For your worldwide import sourcing needs, including the highest quality mills in Africa and South America. To ensure prompt supply of exotics and imports, Hardwoods import consolidation yard is located in Leland, North Carolina.



Anigre



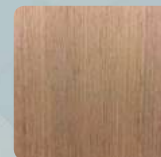
Bubinga



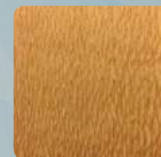
Cedar Spanish



European
Steamed Beech



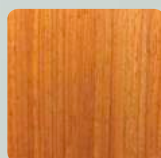
Jatoba
Brazilian Cherry



Lacewood



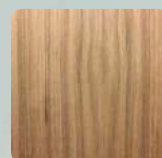
Mahogany African



Paduak



Sapele



Teak



Wenge

Servicing North America



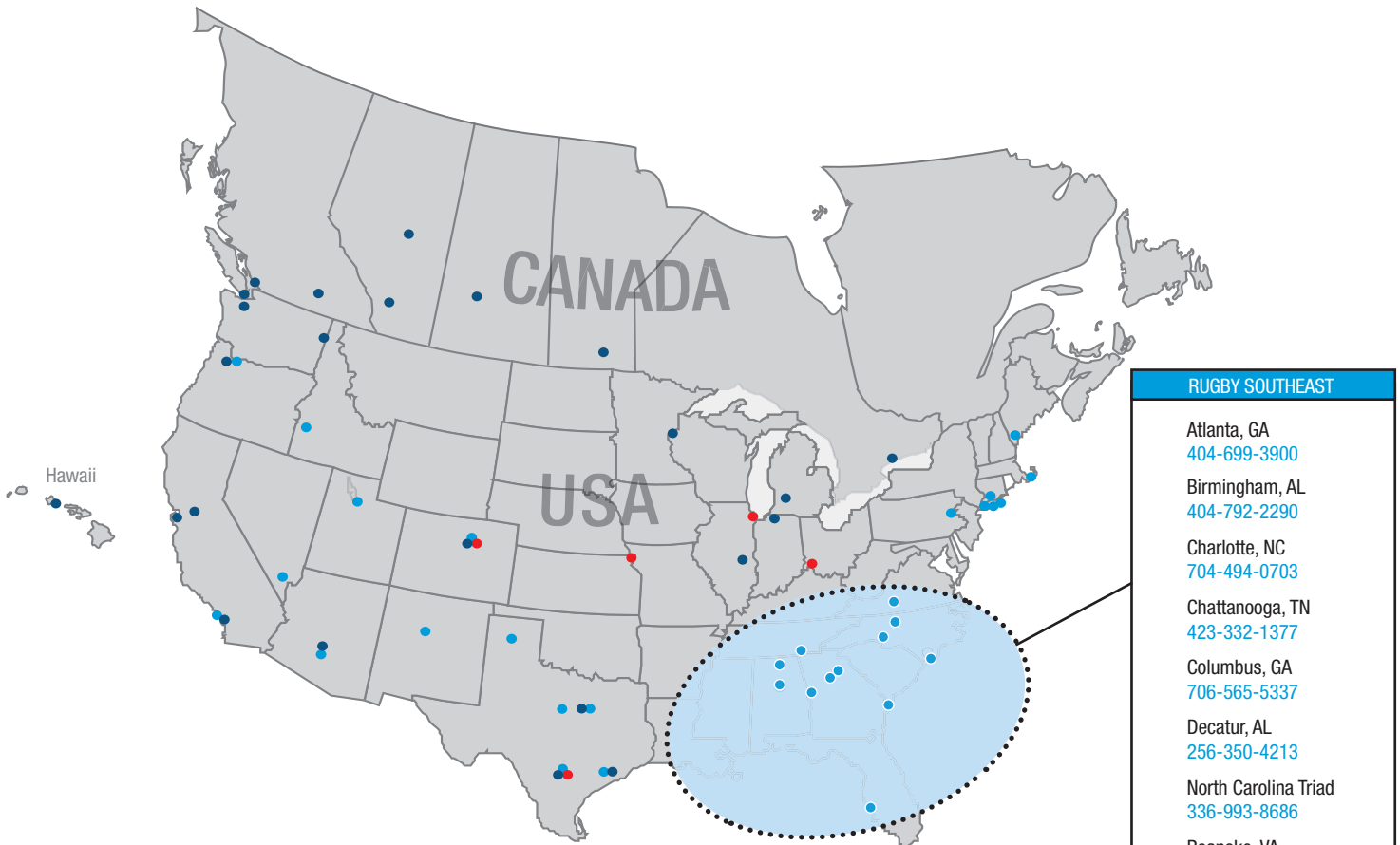
24 LOCATIONS



5 LOCATIONS



32 LOCATIONS



RUGBY SOUTHEAST

- Atlanta, GA
404-699-3900
- Birmingham, AL
404-792-2290
- Charlotte, NC
704-494-0703
- Chattanooga, TN
423-332-1377
- Columbus, GA
706-565-5337
- Decatur, AL
256-350-4213
- North Carolina Triad
336-993-8686
- Roanoke, VA
540-857-0425
- Savannah, GA
912-965-1061
- Suwanee, GA
770-831-8128
- Tampa, FL
813-888-6824
- Wilmington, NC
910-794-7225

Albuquerque, NM
505-924-2270

Denver, CO
303-296-7260

Milford, CT
203-878-9663

Salt Lake City, UT
801-972-9393

Amarillo, TX
806-352-2382

Fort Worth, TX
817-831-6241

Moonachie, NJ
201-807-9701

San Antonio, TX
210-657-5944

Blakeslee, PA
570-646-6724

Gorham, ME
207-887-2070

NY Metro – Bronx
718-589-9700

Boise, ID
208-336-3911

Houston, TX
713-692-3388

NY Metro– Long Island
631-242-4369

Boston Metro – Stoughton
781-341-9255

Las Vegas, NV
702-248-0050

Phoenix, AZ
602-252-3696

Dallas, TX
214-638-5161

Los Angeles, CA
909-466-7315

Portland, OR
503-692-3322



1-855-650-3265
www.rugbyabp.com