

RUGBY
SOUTHEAST

RUGBY®
Architectural Building Products

NEW

FOR 2021

FIND OUT INSIDE



CATALOG

ARCHITECTURAL SPECIALTY PRODUCTS
DECORATIVE SURFACING
ARCHITECTURAL MILLWORK
CABINET HARDWARE AND ADHESIVES



Rugby Architectural Building Products is pleased to present our 2020 Product Catalog that features an extensive assortment of ready-to-assemble and factory assembled cabinets. These cabinets are competitively priced, in stock, and ready-to-install. Solid Surface countertop material, laminate countertops, cabinet accessories and hardware round out the cabinet program.

To help you to quickly assess extensive information on all products we have a brochure-within-brochure feature that provides you with convenient access to more detailed product information. Be sure to check out the thought provoking TED talk video on page 23.

If you have any questions about products or services, please call us at 855-650-3265. The Rugby team is ready to assist and bring deliver these products to your door and remember:

When you need cabinets you need Rugby!

Front Cover Image:
Product: Egger TFL and HPL panels
Project: Residential kitchen



Look for
FSC® Certified
Products



CONTENTS

Cabinet and Accessories by Rugby	1-2
Kitchen Kompact	3
Acrylic Solid Surface: Staron	4
Laminate Countertops: VT Industries	5
Architectural Decor: Querkus	6
Architectural Decor: Shinnoki	7
Architectural Decor: Echo Wood	8
Architectural Decor: Echo Wood PFP	9
Veneers and Edgebanding: Veneer Tech	10
Hardwood Plywood: Columbia FP	11
Hardwood Plywood: Baltic Birch Plywood and Drawersides	12
Hardwood Plywood: DragonPly	13
Hardwood Plywood: Cabinet Grade Plywood	14
Adhesives: Titebond and Choice Brands	15
Particleboard: Arauco and Roseburg	16
PVC Edgebanding: Doellken	17
Drawer Blanks: BHK of America	18
Architectural TFL : Egger	19
Hardware: Salice and Knappe & Vogt	20
Hardware: Rev-a-Shelf	21
Hardware: Pride Decorative	22
Hardware: Deerwood Fasteners	22
Hardwood Lumber	23-24



When You Need Cabinets, You Need Rugby!



Count on Rugby to deliver precisely engineered cabinets with your choice of traditional or contemporary door styles along with an extensive assortment of Rev-A-Shelf accessories. All our products are engineered from high quality materials and backed by comprehensive product warranties.

- Over 1000 different cabinet accessory options
- Both contemporary and traditional door styles
- Comprehensive Rev-A-Shelf hardware program

You provide the space, and we'll provide all the cabinet and accessory solutions you need to get the job done right.



**NATIONWIDE,
FAMILY-OWNED
MADE IN THE USA**



There's solid wood durability built into every KK cabinet. From the hardwood doors and stiles to the solid wood elements, each cabinet is built to last.

Note these quality features:

- All frames are built of solid 3/4" hardwoods. Each rail is kiln-dried, joined by mortise and tenon, and then glued for added strength
- Solid wood toe kicks, 3/4" thick
- Solid wood hanging strips on wall and base cabinets, located at the top and bottom
- End panels consist of 3-ply construction, 1/2" thick engineered wood core with hardwood veneers

All painted and stained cabinets are protected with a durable topcoat. The result is a surface that is virtually "family-proof," resisting many household chemicals, water, alcoholic beverages, mild acids, and even nail polish.

The result is more than just a kitchen you can cook in— it's a kitchen you can live in at a price you can live with.

/ OPEN /



Brochure

/ OPEN /



Price List

staron®

100% Acrylic Solid Surface

Staron high-performance acrylic solid surface is known for excellent workability and easy maintenance. Its homogenous, color-through composition is non-porous and ultra-hygienic, making Staron an ideal surfacing option for a wide range of commercial interior applications and residential spaces.

- 10-year limited commercial warranty
- Ultra hygienic / non-porous
- Thermo-formable
- 90 design inspired color options available
- Integrated sinks and bowls available.
- All ADA compliant
- Sample sets of Staron are available along with individual color samples



/ OPEN /



Brochure

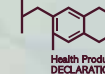
/ OPEN /



Leaflet



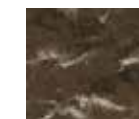
Sample Binder
Available



4 of 90 Colors Stocked by Rugby



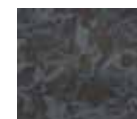
Cloudbank



Loam



Ocean View



Presto

855-650-3265

www.rugbyabp.com

Rugby
Architectural Building Products



In addition to vanities, VT Industries is a leading manufacturer of countertops, offering homeowners dynamic options, including granite, VT TruQuartz,[™] VT Dimensions,[®] and VT VersaTop[™]. We also offer a variety of distinctive edge profiles designed to bring custom style to any kitchen, bath, or bar project.

VT Dimensions[®] countertops bring everything together in one seamless offering—from the slab-like core, to the naturally beautiful surface, to the premium edge profiles.

- State-of-the-art manufacturing assures your satisfaction every time
- 45-lb. industrial particle board as standard (meets HUD and government specs; ANSI approved)
- EQcountertops are FSC[®] certified to originate from responsibly managed forests
- GREENGUARD Gold Certified for low chemical emissions
- PVA glue line provides strongest possible bond between particle board and laminate

/ OPEN /

VT GeoScapes
Brochure

/ OPEN /

VT Dimensions
BrochureDECOSPAN[®]
Wood SolutionsQUERKUS[®]
finest oak collection

Textured European White Oak & Reclaimed Panels

- Wire brushed & patented “saw effect” scratching
- Mixmatch technique to give natural appearance of solid wood
- Thick cut veneer for deep brushing and scratching
- European white oak – matched for color consistency
- Reclaimed veneer from railways in Europe
- 20mm 48.8” x 98.4” on MDF
- 0.8mm and 1mm edgeband available, brushed and scratched

Sample Binder
Available

/ OPEN /



Brochure



Edgebanding



4 of 14 Colors Stocked by Rugby



Adagio



Baltimore



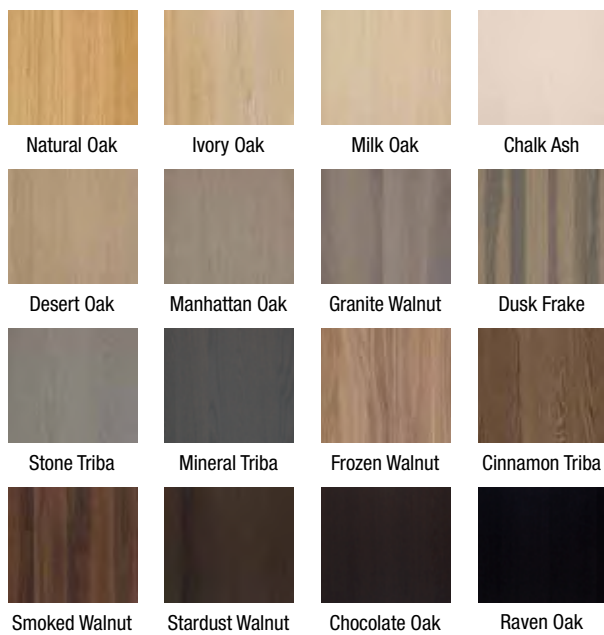
Hoboken



Havana



16 Colors Stocked by Rugby



DECOSPAN.

Wood Solutions

SHINNOKI®
prefinished wood panels

Shinnoki offers prefinished wood veneered panels for architects and cabinet makers to design and create stylish and distinctive interiors. Unlike regular veneered panels, Shinnoki products are ready-to-use and as easy to work with as a melamine board, huge time and cost-saving but with the same unique look and feel that is typical for real wood veneer.

- Prefinished wood panels – 10% sheen matte finish
- Mix match technique to give natural appearance of solid wood
- Unique Designs created by a team of top European Designers
- Protective peel coat to protect finish
- 19mm 48.8" x 109.8" NAF MDF – 2 sided
- Prefinished 0.6mm edgeband and 1mm ABS edgeband available

/ OPEN /

Shinnoki
Brochure

/ OPEN /

Shinnoki Acoustics
Brochure

/ OPEN /

Astrata
Brochure

Edgebanding

EchoWood®
RECONSTITUTED WOOD VENEERS

- High quality, reconstituted, real wood veneer
- 16 popular patterns
- 0.6mm and 2.0mm matching edgebanding
- Veneer sheets or custom panel lay up
- Subject to volume and lead time, an infinite array of custom colors and patterns available
- NAUF, NAF options
- FSC® options available

/ OPEN /



Brochure



Edgebanding



A&D Binder



Fan & Prefinished Sets



4 of the 16 Colors Stocked by Rugby





4 of the 16 Colors Stocked by Rugby



Macassar Qtr. Champagne Qtr. Zebrano Qtr. Cherry

EchoWood® PFP

PREFINISHED PANELS

- Environmentally friendly wood product with accelerated fabrication times
- Consistent 2-sided UV finish with 15° sheen
- Eliminates the need for composing and laying-up the veneers
- Eliminates the need for a finishing line
- Provides environmentally sound finish
- FSC® options available

/ OPEN /



Brochure



Edgebanding



A&D Binder



Fan & Prefinished Sets

Veneer Tech

Veneer Technologies Incorporated

Premium Hardwood Sheet Veneer & Edgebanding

Veneer Technologies, Inc. manufactures high end decorative hardwood veneer faces. They carry most domestic species and have access to many exotic species from around the world. They currently operate ten continuous cross feed splicers, producing approximately 6.5 million finished square feet of face veneer per month.

SHEET VENEER

Manufactured with a select grade face veneer crosslinked to a variety of backers. Backers include 10 mil, 20 mil, 2-ply with cross-grain back, 3M peel-n-stick, polyback, true phenolic. Sizes are 4' x 8', 4' x 10', 4' x 12'. Custom sizes available.

WOOD EDGEBANDING

- Standard wood edgebanding
- 500' rolls, fleeced and sanded
- 250' rolls, preglued EVA hotmelt
- UV prefinished, preglued or fleece backed
- Widths ½" to 2"
- Custom widths and lengths available

MELAMINE EDGEBANDING

- Standard colors
- 250' rolls
- Preglued

THICK WOOD EDGE ROLLS

- 328' rolls. Thickness 1mm, 1.5mm, 2mm, and 3mm

Please inquire about available widths and species

/ OPEN /



Brochure



Most Domestic and Many Exotic Species Available



White Maple Walnut Cherry White Oak European Beech



Alder Sapele Teak Mahogany



columbia FOREST PRODUCTS™

Founded in 1957, Columbia Forest Products is North America's largest manufacturer of hardwood plywood and hardwood veneer products. Columbia's decorative interior veneers and panels are used in high-end cabinetry, fine furniture, architectural millwork and commercial fixtures.

- Species: Various
- Face grades: A,B,C,D,E
- Back grades: 1,2,3,4
- Sizes: 4x6, 4x7, 4x8, 4x10, 5x8, 8x4
- Thickness: 1/8" to 1-1/4"
- Core types: JayCore®, KayCore®, veneer core, particleboard core (PBC), medium density fibercore (MDF), combination core, Classic Core®, lumber core
- UV Capabilities
- FSC® options available



Edgebanding

/ OPEN /



Brochure

PUREBOND
PLYWOOD

/ OPEN /



Brochure

APPALACHIAN
TRADITIONS

/ OPEN /



Brochure

GRADING
GUIDE

BALTIC BIRCH® HARDWOOD PLYWOOD

- Direct importer - more choices and better quality control
- Production quality supervised by Hardwoods employees in Russia
- 3.0mm through 25.0mm
- 5' x 5', 4' x 8', 10' x 4' and 8' x 4' cross grain
- Grades ranging from C/C through B/B
- NAUF, Exterior, and Clear Finished
- Custom sizes and grades available
- Laminating blanks
- FSC® options available

/ OPEN /



Brochure

BALTIC BIRCH® DRAWERSIDES

- Prefinished or Unfinished
- Lengths 5' and 8' or precision trim available
- Thicknesses: 9, 12, 15, 18 mm
- Dado can be ordered to customer spec

/ OPEN /



Brochure





DRAGON PLY®
PREMIUM HARDWOOD PLYWOOD

Premium Hardwood Plywood

Building on the reputation of Quality and Consistent Performance, Dragon Ply is proud to present the newest offerings from the South East Asian region of the globe.

- New countries of origin and new fiber supply chains
- The same consistent quality and performance
- Same cost savings advantage
- Available in both thick and thin face options in several species
- Thick fancy veneers are graded on HPVA standards and composed at the factories using state of the art European veneer composers
- FSC® certified available on request.
TSCA Title VI compliant

/ OPEN /



Brochure



CABINET GRADE BIRCH

- Directly sourced and imported by Rugby
- Quality control inspected by our onsite staff ensures consistent performance and value
- Acacia/Eucalyptus Veneer Core provides flat and stable panels
- Thickness tolerance +/- 0.5mm
- Moisture content under 14%
- Our corporate compliance program ensures a responsible and legal supply chain
- TSCA tested and certified

/ OPEN /



Brochure





Rugby is a full line distributor of all Titebond & Franklin products. Titebond I, II & III Wood Glue, Color matched caulking, Heavy Duty Construction Adhesive, Fast Set Polyurethane Construction Adhesive, FRP Solvent Free Adhesive, Weather Master Sealants, Ultimate MP, Silicones.

/ OPEN /



Brochure

/ OPEN /



Wood Adhesive
Brochure



Choice Brands Adhesives started in 2010 to provide industrial adhesives to a wide variety of markets and applications. Our company was founded by experienced adhesive veterans formerly with Imperial Adhesives / Sovereign Adhesives / Henkel Adhesives.

/ OPEN /



Current Catalog

We serve a wide variety of markets:

Cabinets and Millwork, Countertops, Office Furniture, Case Goods, Panel Lamination, Furniture, Foam Fabricating, Bedding, Sporting Goods, Commercial Roofing, Insulation, Waterproofing, Marine, Recreational Vehicle, Automotive Aftermarket

arauco

/ OPEN /



Brochure

- 1/2" - 1-1/8" thick, 4', 5' and 6' wide
- Cut to size and countertop sizes
- CARB2, ULEF, NAF, FSC® Certified
- Available in Water resistant, Fire rated and FSC® certified
- Products include Duraflake, Vesta, Terra



Roseburg produces one of the most popular machinable particleboard panels on the market today. Our UltraBlend panels are a premium-quality, mat-formed, multilayer wood particle board. These panels are made predominantly of precision-refined wood particles that are bonded with thermosetting resins.

UltraBlend features a highly refined smooth surface and tight uniform core with machinable edges and excellent dimensional stability. UltraBlend particleboard panels are designed for the demanding laminating and edge machining applications of today's precision woodworking industry.

/ OPEN /



Brochure





DÖLLKEN

PVC EDGEBANDING

Doellken PVC Edgebanding is the finest, most consistent product available on the market today. Typical applications of PVC Edgebanding include residential and office furniture, institutional caseloads (laboratories, hospitals, medical offices, schools, etc.), store fixtures, kitchens, locker rooms and numerous others. Doellken Edgebanding comes in thicknesses of .018" (0.45 mm) to 3 mm and widths ranging from 5/8" (16mm) to 2-3/16" (55mm).

- The SpecLine and DoellkenFlex program are available from stock in 5 different sizes
- All edgebanding products are available in solid colors, designer patterns and woodgrains
- With 11 different embosses, your edgebands will have a natural appearance and a deep emboss feel

/ OPEN /



Brochure



OF AMERICA

BHK knows that selecting a drawer manufacturer is a major decision. You want to make sure you get the quality your project demands, the price that affords you a profit and the service you deserve. BHK of America has manufactured quality drawer systems for more than 30 years and has built its success on service, value and superior craftsmanship.

To maximize the functionality of your drawer space BHK offers multiple storage and convenience options. In order to build the highest quality wood drawers, you have to start with the finest quality materials. For that, BHK select from the most beautiful domestic species including Maple, Tilia, Cherry and Red Oak.

- Tilia bottom thickness - 1/4", Bottom Thickness for Maple, Cherry & Red Oak is 3/8"
- Custom Heights Ranging from 1 1/2" to 15"
- English Dovetail Construction
- 3/8" Bottoms made from VC Plywood
- Durable Clear Satin Finish is Standard (Unfinished or staining available upon request)
- Standard Eased Top Edge (Straight top edge available upon request)
- Front Drilling
- White Vinyl Wrapped
- Baltic Birch

/ OPEN /



Brochure

/ OPEN /



Brochure



CHOOSE FROM A LARGE VARIETY
OF BHK BLANK OPTIONS

4 CUTS ► ADD BOTTOM ► ASSEMBLE ► DONE

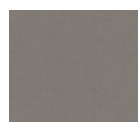


35 Colors In Stock and Available Immediately

All Available 297 Colors Can Be Ordered On Request.
Please Contact Your Southeast Rugby Branch For More Details.



Shorewood



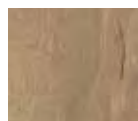
Anthracite Linen



Attic Wood



White Cape Elm



Natural Halifax Oak



Thermo Pine



PerfectSense Gloss Lacquered Boards

Based on EGGER's proven MDF quality PerfectSense Gloss represents the premium category of high-gloss decorative lacquered boards.

With its exceptional level of reflection, exceptionally smooth finish and unique brilliance, PerfectSense Gloss represents pure luxury.

Benefits:

- High depth effect and mirror gloss finish
- Supports economic manufacturing
- Premium appearance with glasslike finish
- High resistance to micro-scratches ensures long lasting brilliant surface

Areas of application: Residential and commercial areas as well as retail

Feelwood synchronized pore (EIR) on TFL

EGGER's Feelwood range of decors specially designed with multi-layers of papers to create a depth of texture often seen with solid wood. These decors represent the premium category among the 223 TFL decors within the EGGER decorative collection.

Benefits:

- CARB2/TSCA conformity and FSC® Mix Credit certified products are available on request
- No compromise in appearance and performance due to available décor matching laminate and edging materials
- Offer the best of two worlds: Wood reproductions designed by nature with a high-quality and lightfast finish
- Benefit from short lead times through local stock

/ OPEN /



Brochure



Decorative Collection Folder



Edgebanding Available



Established in 1989, Salice America reflects the leadership claimed by the European parent company for over 50 years.

A complete product line of concealed hinges, drawer slides and sliding door systems has made our company the technology leader of the market, a never ending task requiring solid engineering and innovative mentality.

/ OPEN /



Silentia Hinges

/ OPEN /



Futura Runners

/ OPEN /



Pacta Hinge

/ OPEN /



Wind Lift System



KNAPE & VOGT®

Knappe & Vogt design and manufacture precision, Euro-style and utility slide systems; wall-attached shelving for commercial, home and garage applications; kitchen, closet and bath storage; office and healthcare ergonomics products and specialty hardware. We offer these products under several well-known brand names: KV®, KV Waterloo®, HyLoft®, Real Solutions for Real Life®, John Sterling™ and Shelf-Made®.

/ OPEN /



Brochure



For every type of movement... the answer is Salice. A comprehensive range of products that combines excellence in research-based design and technical expertise to provide solutions for every domestic furniture application.

- 1 - Hinges and mounting plates
- 2 - Lifting systems
- 3 - Sliding systems
- 4 - Runners
- 5 - Drawers

SALICE





Wide Range of Cabinet Accessories

Rev-A-Shelf was established in 1978 as a division of Jones Plastics and Engineering, a family owned injection molder of appliances parts, and other custom polymer components (ISO 9002 Certified) with five manufacturing facilities in Kentucky, Tennessee, and Monterrey, Mexico.

Our Product line began as metal and polymer Lazy Susan components manufactured for the largest U.S. cabinet manufacturers and has grown into the market leading innovator of quality, functional residential cabinet storage and organizational products such as Lazy Susans, Kitchen Drawer Organizers, Base Cabinet and Pantry Pull-Outs, functional Waste Containers, LED lighting systems and Childproof Locking System. Our worldwide presence extends from the U.S. to Europe, Asia, and Mexico, with factories, warehouses and satellite offices strategically located to serve an expanding customer base of kitchen dealers, architects, furniture manufacturers, cabinet industry distributors and retail home centers worldwide.

/ OPEN /



Brochure



Pride Industrial is a premier manufacturer of hardware for the woodworking industry. We firmly believe in top quality products and the most reliable service.

Our extensive decorative product line includes: elegant designs of handles and knobs for cabinetry and furniture; hand carved wood such as corbels, bar brackets, island posts, onlays and vanity legs.

/ OPEN /



Brochure



Deerwood Fasteners™ is a leading supplier of High Quality Fasteners manufactured exclusively for woodworking applications. We service our nationwide customer base from our headquarters in Conover, NC and a regional warehouse in California.

Our products include Hinge and Hardware screws in a variety of finishes, Zip Drivers (Self drilling, Self-Counter sinking assembly screws), Painted Head Cabinet Installation screws, Decking screws, Face Frame screws, Drawer Front Adjuster Screws and much, much more.



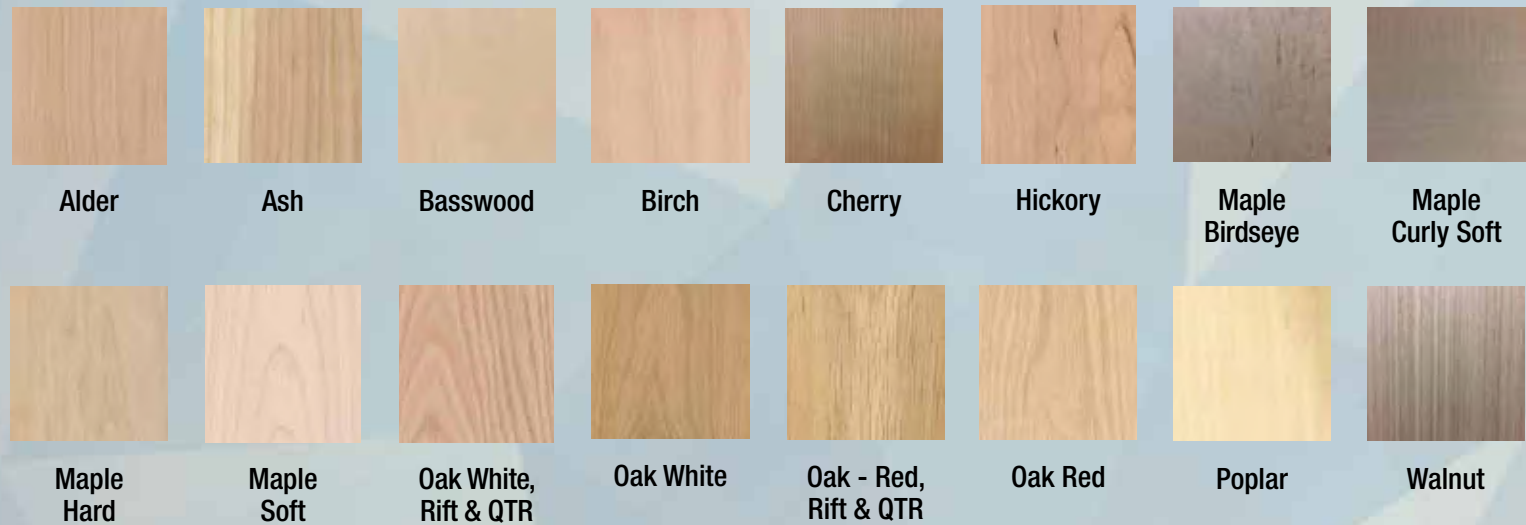
DECORATIVE





DOMESTIC SPECIES: HARDWOOD

- 4/4 through 16/4. All lengths and grades
- S2S, SL1E and ripping available
- Width sorted Red Oak, Hard Maple, and Poplar
- S4S, Sanding and Custom millwork packages including custom knife grinding available



DOMESTIC SOFTWOOD AND IMPORTED SPECIES

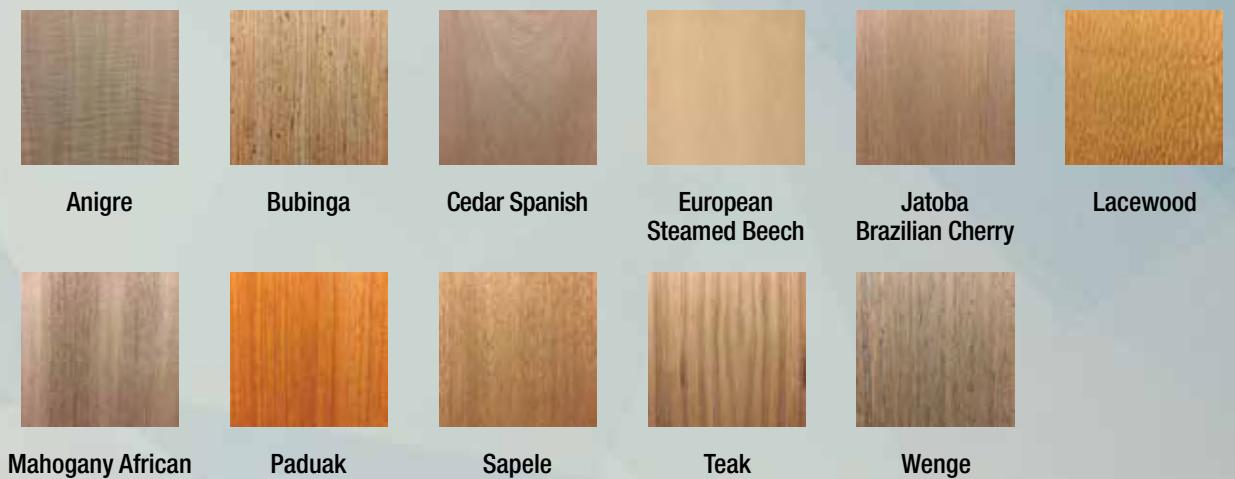
A comprehensive assortment of Domestic and Imported Options

DOMESTIC SPECIES: SOFTWOOD



IMPORTED SPECIES

For your worldwide import sourcing needs, including the highest quality mills in Africa and South America. To ensure prompt supply of exotics and imports, Hardwoods import consolidation yard is located in Leland, North Carolina.



TED Talks: How Hardwood Lumber Improves Our Lives

– Criswell Davis | Hardwood Expert

[WATCH NOW](#)



Servicing North America



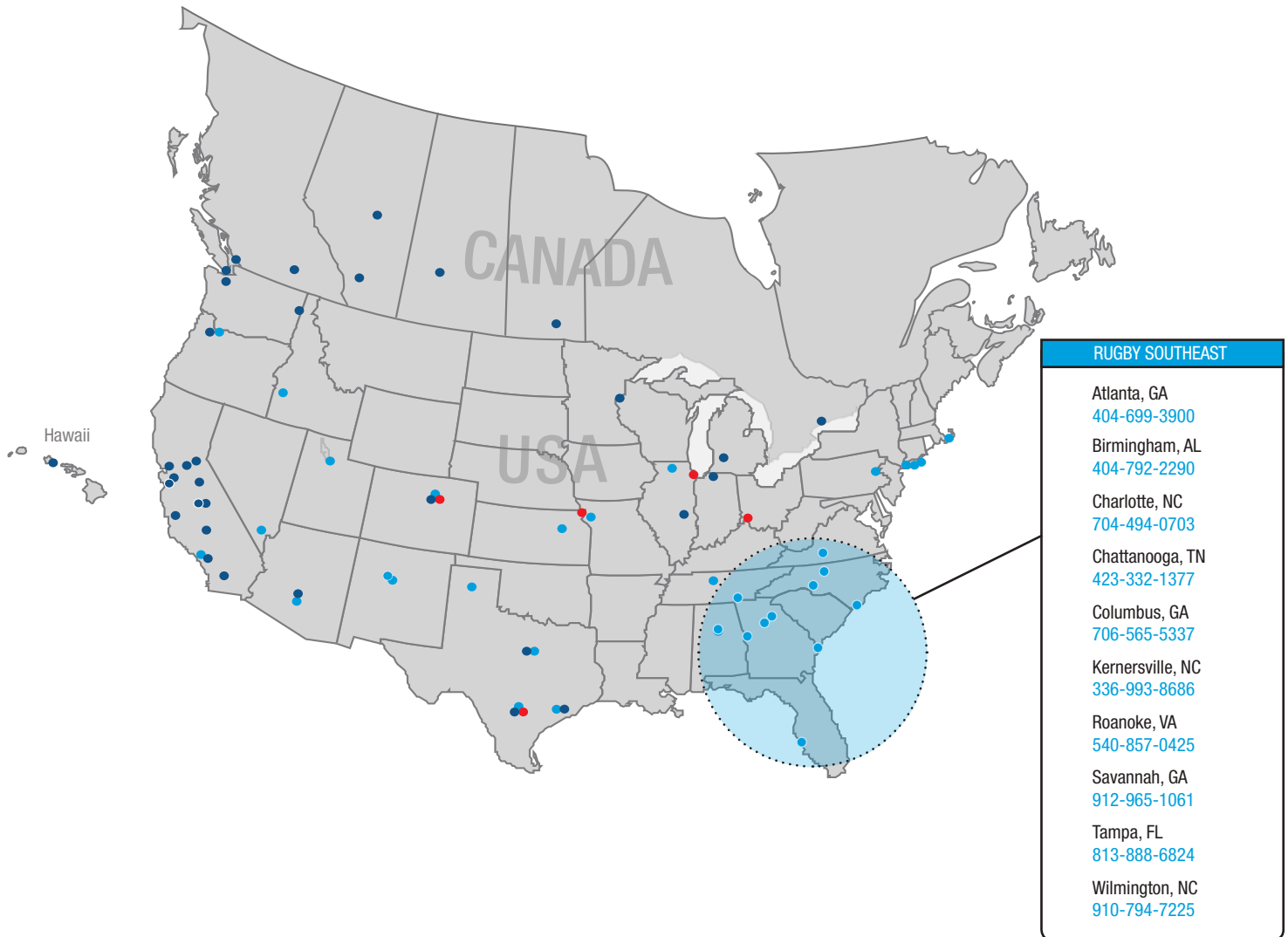
33 LOCATIONS



5 LOCATIONS



31 LOCATIONS



Albuquerque, NM
505-924-2270

Denver, CO
303-296-7260

Nashville, TN
615-885-0355

Rockford, IL
800-892-9297

Amarillo, TX
806-352-2382

Houston, TX
713-692-3388

NY Metro – Bronx
718-589-9700

Salt Lake City, UT
801-972-9393

Blakeslee, PA
570-646-6724

Kansas City, MO
816-531-0161

NY Metro– Long Island
631-242-4369

San Antonio, TX
210-657-5944

Boise, ID
208-336-3911

Las Vegas, NV
702-248-0050

Olathe, KS
913-738-8074

Boston Metro – Stoughton
781-341-9255

Los Angeles, CA
909-466-7315

Phoenix, AZ
602-252-3696

Dallas, TX
214-638-5161

Moonachie, NJ
201-807-9701

Portland, OR
503-692-3322



1-855-650-3265

www.rugbyabp.com