

RUGBY
LOS
ANGELES

RUGBY®
Architectural Building Products

NEW

FOR 2020

FIND OUT INSIDE

CATALOG

ARCHITECTURAL PANELS AND SPECIALTY PRODUCTS
ACRYLIC SOLID SURFACE
ARCHITECTURAL MILLWORK





America's Leading Distributor
of Architectural Wood Products, Decorative Surfacing,
Architectural Millwork and Hardware located in 31 major
US cities, servicing 35 states

WHY MAKE RUGBY YOUR SUPPLIER?

Rugby is Proven Reliability. Rugby is committed to fulfilling its promise to supply high quality products, competitively priced and delivered in a timely manner by industry professionals who know the value of exceptional service.

FRONT COVER IMAGE:
Product: Staron
Project: Samsung Human Resources Development Institute



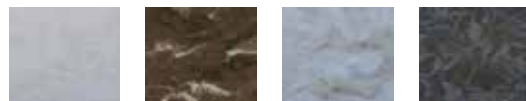
CONTENTS

	Page N ^o
Acrylic Solid Surface: Staron	1
Sinks and Bowls: Staron	2
Architectural Decor: Echo Wood	3
Architectural Decor: Echo Wood PFP	4
Architectural Decor: Shinnoki	5
Architectural Decor: Querkus	6
Architectural Decor: Nordus	7
High Gloss Acrylic Panels: StyleLite	8
Particleboard: Timber Products.....	9
Particleboard: Roseburg	10
Particleboard: Arauco and Ampine.....	11
TFL: KML and Roseburg.....	12
TFL: American Laminates and Spectrum	13
Ultralight MDF: Arauco Trupan and Masisa	14
Domestic MDF: Roseburg and Weyerhaeuser	15
Architectural TFL: Egger.....	16
Architectural TFL: Grupo Alvic	17
IMP Hardwood Plywood: AraucoPly and Baltic Birch	18
DOM Hardwood Plywood: Roseburg and Timber Products	19
Hardwood Countertops: John Boos	20
Hardwood Veneers and Edgebanding: Veneer Tech	21
PVC Edgebanding: Doellken	22
Reclaimed Wood: Mission Bell.....	23
Hardwood Lumber	24-25





4 of the 90 Colors Stocked by Rugby



Cloudbank

Loam

Ocean View

Presto

staron®

100% Acrylic Solid Surface

Staron high-performance acrylic solid surface is known for excellent workability and easy maintenance. Its homogenous, color-through composition is non-porous and ultra-hygienic, making Staron an ideal surfacing option for a wide range of commercial interior applications and residential spaces.

- 10-year limited commercial warranty
- Ultra hygienic / non-porous
- Thermo-formable
- 90 design inspired color options available
- Integrated sinks and bowls available.
- All ADA compliant
- Sample sets of Staron are available along with individual color samples

/ OPEN /



Brochure

/ OPEN /



Leaflet



Samples Available

SURFACE MATERIALS
NO.1 NO.3
IN KOREA IN THE WORLD



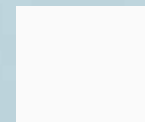
staron®

Sinks and Bowls

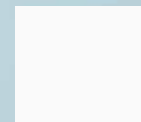
An integral sink will improve the efficiency and hygienic qualities of a kitchen or bath area and, particularly, interior commercial applications. Staron all-acrylic sinks and bowls are installed in combination with Staron sheet materials as part of a continuous surface featuring imperceptible seams for a perfect, uninterrupted fit. That also means there are no gaps or crevices for bacteria or mold to accumulate and grow. Whichever style you choose, Staron's non-porous, hygienic surfaces will always be easy to clean and maintain.

Choose from three coordinated sink color options from a collection of ten, popular models.

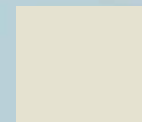
Available Colors



Bright White



Pearl



Ivory



Sink A1121



Sink A1131



Sink A1181



Sink A1231



Sink A2311



Sink A2321



Sink A2341



Bowl A3181



Bowl A3211



Bowl A3201





4 of the 16 Colors Stocked by Rugby



Qtr. Wenge

Monterey

Napa

PS Walnut

EchoWood®

RECONSTITUTED WOOD VENEERS

- High quality, reconstituted, real wood veneer
- 19 popular patterns
- 0.6mm and 2.0mm matching edgebanding
- Veneer sheets or custom panel lay up
- Subject to volume and lead time, an infinite array of custom colors and patterns available
- NAUF, NAF options
- FSC® options available

/ OPEN /



Brochure



Edgebanding



A&D Binder



Fan & Prefinished Sets

EchoWood® PFP

PREFINISHED PANELS

- Environmentally friendly wood product with accelerated fabrication times
- Consistent 2-sided UV finish with 15° sheen
- Eliminates the need for composing and laying-up the veneers
- Eliminates the need for a finishing line
- Provides environmentally sound finish
- FSC® options available

/ OPEN /



Brochure



Edgebanding



A&D Binder



Fan & Prefinished Sets



4 of the 16 Colors Stocked by Rugby



Macassar

Qtr. Champagne

Qtr. Zebrano

Qtr. Cherry

DECOSPAN®
Wood Solutions

SHINNOKI®

prefinished wood panels

Shinnoki offers prefinished wood veneered panels for architects and cabinet makers to design and create stylish and distinctive interiors. Unlike regular veneered panels, Shinnoki products are ready-to-use and as easy to work with as a melamine board, huge time and cost-saving but with the same unique look and feel that is typical for real wood veneer.

- Prefinished wood panels – 10% sheen matte finish
- Mix match technique to give natural appearance of solid wood
- Unique Designs created by a team of top European Designers
- Protective peel coat to protect finish
- 19mm 48.8" x 109.8" NAF MDF – 2 sided
- Prefinished 0.6mm edgeband and 1mm ABS edgeband available

/ OPEN /



Shinnoki
Brochure

/ OPEN /



Shinnoki Acoustics
Brochure

/ OPEN /



Astrata
Brochure



Edgebanding



16 Colors Stocked by Rugby



Natural Oak



Ivory Oak



Milk Oak



Chalk Ash



Desert Oak



Manhattan Oak



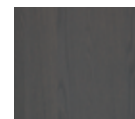
Granite Walnut



Dusk Frake



Stone Triba



Mineral Triba



Frozen Walnut



Cinnamon Triba



Smoked Walnut



Stardust Walnut



Chocolate Oak



Raven Oak



4 of 14 Colors Stocked by Rugby



Adagio



Baltimore



Hoboken



Havana

DECOSPAN®

Wood Solutions

QUERKUS

finest oak collection

Textured European White Oak & Reclaimed Panels

- Wire brushed & patented “saw effect” scratching
- Mixmatch technique to give natural appearance of solid wood
- Thick cut veneer for deep brushing and scratching
- European white oak – matched for color consistency
- Reclaimed veneer from railways in Europe
- 20mm 48.8” x 98.4” on MDF
- 0.8mm and 1mm edgeband available, brushed and scratched

Sample Binder
Available

/ OPEN /



Brochure



Edgebanding

DECOSPAN®

Wood Solutions

Nørdus

the scandinavian collection

Contemporary Softwood Panels

For the ‘Nørdus’ collection, only the best softwood and birchwood is collected and carefully processed into finely cut veneer. This way, the raw materials are optimized. Advanced surface treatments reinforce the unique beauty of wood and highlight its 3D aspect. A team of trend watchers suggested various trendy finishing options such as metallic shades, ash grey or neutral white accents allowing ‘Nørdus’ to be integrated in every interior.

- Advanced surface treatments highlight 3D aspect
- Unfinished panels are easily customized to cover broad color palette range
- Scandinavian influence easily integrated into modern design
- Mixmatch technique to give natural appearance of solid wood
- 19mm x 4’ x 9’ G2S Panels
- Matching .6mm thick edgebanding
- Matching 4’ x 9’ flexible veneer

/ OPEN /



Brochure



Edgebanding

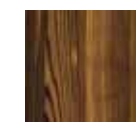
Sample Binder
Available

Flex Veneer

A Nørdus panel is composed of a top layer of real wood veneer, a core of 18 mm MDF and a backing of real wood veneer for stability reasons. The top layer is always jointed veneer sheet in accordance with the chosen design, composed using our mix match technique.



Available Colors



Larch – Autumn



Larch – Winter



Larch – Spring



Spruce – Clean



Pine – Wild



Available Colors



StyleLite®

The Ultimate High Gloss and Matte Panel System

- Manufactured using state-of-the-art equipment and the finest materials, StyleLite possesses an optical grade surface of the highest quality compared to all other traditional categories of high gloss panels
- StyleLite's deep, mirror-like gloss surface contains none of the obvious orange peeling, imperfections or telegraphing inherent in inferior high gloss panel types such as melamines, laminates, thermofoils (vinyl wraps) and most painted panels
- StyleLite is generally repairable if lightly or moderately scratched saving time, money and inconvenience

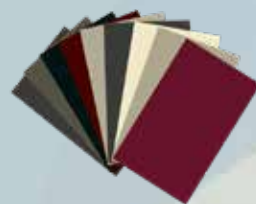
/ OPEN /



Brochure



Edgebanding

Sample Binder
AvailableLaminated Samples
Available

Timber Products Company

THE TREMENDOUS RESOURCE®



- 3/8" up to 1-1/2" on standard panels
- 5' x 24' 20 opening press
- NAF, CARB Exempt
- MR10, MR50, and FR panels available
- ECC and SCS Certified Composite Panels
- Cal Green compliant
- Ampine NAF panels – Ampine NAF Industrial, Commercial, UnderLayment, Counter Top, Shelving
- Encore NAF panels – Encore, Encore FR, Encore MR 50, Encore HD, Encore Select, Encore Counter Top
- APEX NAF panels – APEX, APEX MR50, APEX FR, APEX Shelving
- All Encore and APEX panels carry a minimum of an MR10 moisture rating other than the Encore FR, and APEX FR
- Custom Cut To Size Program
- FSC® options available

/ OPEN /



Brochure



Edgebanding



Roseburg

A Forest Products Company

Roseburg produces one of the most popular machinable particleboard panels on the market today. Our UltraBlend panels are a premium-quality, mat-formed, multilayer wood particle board. These panels are made predominantly of precision-refined wood particles that are bonded with thermosetting resins.

UltraBlend features a highly refined smooth surface and tight uniform core with machinable edges and excellent dimensional stability. UltraBlend particleboard panels are designed for the demanding laminating and edge machining applications of today's precision woodworking industry.

/ OPEN /



Brochure

arauco

- 1/2" - 1-1/8" thick, 4', 5' and 6' wide
- Cut to size and countertop sizes
- CARB2, ULEF, NAF, FSC® Certified
- Available in Water resistant, Fire rated and FSC® certified
- Products include Duraflake, Vesta, Terra

/ OPEN /



Brochure

ampine®

Division of

Timber Products Company

THE TREMENDOUS RESOURCE™



Specially engineered for excellent machinability and screw-holding power

We manufacture both fir and pine particle board substrates. We produce all grades to fit your needs, including underlayment, commercial, industrial, and specialty projects. It is also available in many thicknesses, widths and lengths that are not available in plywood. We can create custom sizes and specifications to meet individual customer needs.

All of our particle board:

- Resists warping, sagging, and chip-out
- Provides excellent machinability and screw-holding power
- Ideal choice for a wide range of applications
- Contains 100% post-industrial recycled/recovered fiber

/ OPEN /



Brochure



With 8 unique designer finishes, over 90 stock colors (and more than 900 specialty colors), 4 substrate options, 2 lamination processes, and a component department that offers cut-to-size boards up to 12 feet long, KML allows designers to “go wild” with unprecedented customization.

- Eight presses, split between state-of-the-art facilities in Tacoma, WA and Stockton, CA, producing a shared 4,000 panels a day
- 900 patterns and textures with edge banding and machined parts



Edgebanding

/ OPEN /



Brochure



- Premium Melamine
- 16 Assorted colors, finishes, and textures
- Prompt lead times on special orders
- Produced in M2 Pine Core material
- Offered in smooth, textured woodgrain finishes



PVC Edgebanding

/ OPEN /



Brochure

Sample Binder
AvailableLaminated Samples
Available

Whether you are designing furniture, commercial fixtures or cabinets, you can count on Duramine® to offer great looks and proven value. Our broad selection of rich woodgrains, contemporary abstracts, solid colors and fine textures offer everything you need to design and manufacture extraordinary finished products.

Roseburg goes the extra step to ensure that quality is built in – all the way through the process.



Edgebanding

/ OPEN /



Brochure



Spectrum melamine is available in a wide range of colors, wood grains, and decorative patterns. We also have access to hundreds of others with small order minimums. We thermally fuse the melamine to your choice of high-quality substrates, most manufactured in our own facilities. Furthermore, we can custom-design and engineer a panel to meet your exact specifications, including panels up to 5-feet wide and 10-feet long.

/ OPEN /



Brochure



PVC Edgebanding



arauco Trupan.

High-quality Trupan MDF is a CARB-certified, lighter-weight panel that offers the perfect blend of physical-mechanical characteristics. Ideal for furniture making and interior design applications.

Trupan panels combine outstanding appearance with exceptional technical properties, making them the ideal option for furniture, cabinetry, millwork, moulding, slatwall and flooring, among other interior applications.

arauco Trupan. Ultralight

Trupan Ultralight is manufactured using 100% fresh pine fiber, forming a light-weight, workable panel with a light, uniform color.

Trupan Ultralight MDF provides a smooth, flawless surface and a consistent density profile, and is an ideal choice for millwork and lamination applications where finished product weight is a concern. Trupan Ultralight MDF panels have an average density of 32 lb/ft³

/ OPEN /



Brochure

Masisa Ultralight MDF

Timber Products Company
THE TREMENDOUS RESOURCE™

Masisa Ultralight MDF is a medium density fiberboard that weighs about 30% less than standard MDF. Manufactured in Chile from 100% radiata pine, it features an even density profile and a smooth, flawless surface. Thanks to the wide range of available options (12-30mm, 4'x8' and 5'x10'), Masisa MDF is incredibly versatile.

/ OPEN /



Brochure

Roseburg A Forest Products Company

Roseburg offers the most technically diverse line of medium density fiberboard (MDF) products in North America. From moisture resistant to flame retardant to no-added formaldehyde (NAF), Roseburg has an MDF panel to suit your every need.

Medex® MDF

Medex® is a sustainable, moisture resistant, medium density fiberboard (MDF) panel utilizing a synthetic resin system and pre-consumer recycled wood fiber. Medex® is engineered for interior high moisture areas in non-structural applications and is used in place of sanded plywood or solid wood. With the versatility of a superior composite wood panel and the enhancement of indoor air quality, Medex® has been specified in hundreds of commercial, institutional and conservator projects since the 1980s. Manufactured in Medford, OR.

/ OPEN /



Brochure

Medite® MDF

Medite® is the foundation of the Roseburg MDF product line and offers a smooth hard surface, exceptional machining, plus clean, sharp edges for cutting and drilling applications. Medite® is a competitive workhorse representing uniformity in MDF and suitable for precision part manufacturing.

/ OPEN /



Brochure

Weyerhaeuser™

Weyerhaeuser Super-Refined MDF2® is an engineered wood panel prized by woodworkers for its exceptional qualities, including a smooth, unblemished surface

- Optimized for painting and laminating
- A homogeneous fine fiber core
- Smooth machined fine profiles and edges
- Exacting tolerance standards
- Available in a thickness range of 0.063" to 1.625" (1.6mm to 41.3mm)

/ OPEN /



Brochure



FORMERLY





A Variety of Colors

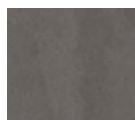
All Available 297 Colors Can Be Ordered On Request.
Please Contact Your Local Rugby Branch For More Details.



Black



Brown Linen



Chromix Anthracite



Grey-Beige Tossini Elm



Natural Halifax Oak



White Mountain Larch



PerfectSense Gloss Lacquered Boards

Based on EGGER's proven MDF quality PerfectSense Gloss represents the premium category of high-gloss decorative lacquered boards.

With its exceptional level of reflection, exceptionally smooth finish and unique brilliance, PerfectSense Gloss represents pure luxury.

Benefits:

- High depth effect and mirror gloss finish
- Supports economic manufacturing
- Premium appearance through the glasslike finish
- High resistance to micro-scratches ensures long lasting brilliant surface

Areas of application: Residential and commercial areas as well as retail

Feelwood synchronized pore (EIR) on TFL

EGGER's Feelwood range of decors specially designed with multi-layers of papers to create a depth of texture often seen with solid wood. These decors represent the premium category among the 223 TFL decors within the EGGER decorative collection.

Benefits:

- CARB2/TSCA conformity and FSC® Mix Credit certified products are available on request
- No compromise in appearance and performance due to available décor matching laminate and edging materials
- Offer the best of two worlds: Wood reproductions designed by nature with a high-quality and lightfast finish
- Benefit from short lead times through local stock

/ OPEN /



Brochure

/ OPEN /

Divisional
Stock ProgramDecorative Collection
Folder

Edgebanding



Feel the innovation

Alvic places at the disposal of designers, architects and interior designers a collection of colors, designs and fantasies that set the trend for the next few years. Their products, in their various service options (panel format or finished piece) can be applied to all kinds of furniture and decorations.

Alvic has developed two new module collections, Classic and Avantgarde, which bring together aesthetics, ergonomics and versatility.

This new collection includes features in line with the ergonomic and functional needs that users' demand and involves yet another example of how the company is able to adapt to market requirements.

The modules are offered in trend-led colors and designs that can combine the inside of the furniture with the different ranges, LUXE, ZÉNIT and SYNCRON as well as with the EVOLUTION DRAWER, creating a harmonious decorative and functional whole.

Similarly the antibacterial quality that the new collection enjoys, guarantees optimal hygiene conditions in the daily use of the product.

/ OPEN /



Current Catalog

Sample Binder
Available

Edgebanding

Laminated Samples
Available

3 of the 30 Colors Stocked by Rugby

Zenit Panel
MagnoliaSynchron Panel
CaféSynchron Panel
Espresso



arauco ARAUCOPY[®]

AraucoPly[®] Sanded Panels are finished with 150-grit sandpaper on the face and 120-grit sandpaper on the back, facilitating easy finishing with excellent results. All grade-stamped AraucoPly[®] Sanded Panels are manufactured in accordance with the US PS 1-09 product standard, and all ACX and BCX products are PS1-09 underlayment compliant and are edge stamped as such by TECO.

- 100% radiata pine
- Stable composed core with minimum voids
- High quality solid face
- Ideal for interior and exterior applications
- Pre-sanded and ready to finish
- Allows a variety of finishes

/ OPEN /



Brochure

BALTIC BIRCH[®]

HARDWOOD PLYWOOD

- Direct importer - more choices and better quality control
- Production quality supervised by Hardwoods employees in Russia
- 3.0mm through 25.0mm
- 5' x 5', 4' x 8', 10' x 4' and 8' x 4' cross grain
- Grades from C/C through B/B
- NAUF, Exterior and Clear Finished
- Custom sizes and grades available
- Laminating blanks
- FSC[®] options available

/ OPEN /



Brochure

Roseburg

A Forest Products Company

SKYPLY HARDWOOD PLYWOOD

Roseburg combined No Added Urea Formaldehyde (NAUF) technology with veneer core Hardwood Plywood manufacturing to produce a panel that may contribute to achieving LEED[™] points. These panels are also available with FSC veneer core which may contribute to an additional LEED[™] point.

- Available in a wide range of hardwood veneer faces and backs
- Great for uses in furniture, fixtures, millwork, cabinets, and shelving
- Optional Combination Fiber Core (CFC) that combines veneer inner plies with Medium Density Fiberboard (MDF) outer plies

/ OPEN /



Brochure

Timber Products Company

THE TREMENDOUS RESOURCE[®]

Timber Products Company has pioneered hardwood plywood manufacturing, creating products that are unrivaled in quality, craftsmanship and environmental responsibility. Today, all of TPC hardwood plywood is environmentally certified and meets the strictest emission requirements in the world.

Timber Products' hardwood plywood features real wood veneers handpicked by seasoned professionals.

/ OPEN /



Brochure





ULTRA-PREMIUM COUNTERTOPS

Built on a history of over 125 years of American craftsmanship, Boos® butcher block surfaces fill your kitchen with timeless tradition in countertop appearance while maintaining a natural food safe element for food preparation. Ultra premium countertops are manufactured with full length continuous rails from our choice selections of American hardwoods.

END GRAIN COUNTERTOPS

Easy on the eye, easy on the knife - Boos® end grain island tops are manufactured in a vertically glued "checkerboard" lay-up. This unique island top offering reveals the best of the natural elements in hardwood grain.

BLENDED COUNTERTOPS

Boos® Blended kitchen countertops are a full character offering of nature's design at its best. Manufactured with random lengths of finger-jointed interior rails, the Blended KCT series offers a harmonious blend of heartwood, sap, natural mineral, and grain.

/ OPEN /



Online Catalog



Premium Hardwood Sheet Veneer & Edgebanding

Veneer Technologies, Inc. manufactures high end decorative hardwood veneer faces. They carry most domestic species and have access to many exotic species from around the world. They currently operate ten continuous cross feed splicers, producing approximately 6.5 million finished square feet of face veneer per month.

/ OPEN /



Brochure

SHEET VENEER

Manufactured with a select grade face veneer crosslinked to a variety of backers. Backers include 10 mil, 20 mil, 2-ply with cross-grain back, 3M peel-n-stick, polyback, true phenolic. Sizes are 4' x 8', 4' x 10', 4' x 12'.

Custom sizes available.



Sample Binder
Available

WOOD EDGEBANDING

- Standard wood edgebanding
- 500' rolls, fleeced and sanded
- 250' rolls, preglued EVA hotmelt
- 3M peel-n-stick
- UV prefinished, preglued or fleece backed
- Widths ½" to 2"
- Custom widths and lengths available



Laminated Samples
Available

THICK WOOD EDGE ROLLS

- 328' rolls. Thickness 1mm, 1.5mm, 2mm, and 3mm

Please inquire about available widths and species



Most Domestic and Many Exotic Species Available





DÖLLKEN

PVC EDGEBOARDING

Doellken PVC Edgebanding is the finest, most consistent product available on the market today. Typical applications of PVC Edgebanding include residential and office furniture, institutional caseworks (laboratories, hospitals, medical offices, schools, etc.), store fixtures, kitchens, locker rooms and numerous others. Doellken Edgebanding comes in thicknesses of .018" (0.45 mm) to 3 mm and widths ranging from 5/8" (16mm) to 2-3/16" (55mm).

- The SpecLine and DoellkenFlex program are available from stock in 5 different sizes
- All edgebanding products are available in solid colors, designer patterns and woodgrains
- With 11 different embosses, your edgebands will have a natural appearance and a deep emboss feel

/ OPEN /



Brochure



Mission Bell is the highest quality and most responsive architectural millwork company in the greater Bay Area. We take pride in our unique capabilities, focus on sustainability, lean manufacturing capabilities, safety programs, and our magnificent shop in the South Bay and beautiful showroom in San Francisco.

There is a richness and warmth that comes from using wood that has been previously used or has been saved from being discarded. Most reclaimed or salvaged wood has unparalleled architectural quality and character – and often an interesting story that makes it especially attractive for projects.

/ OPEN /

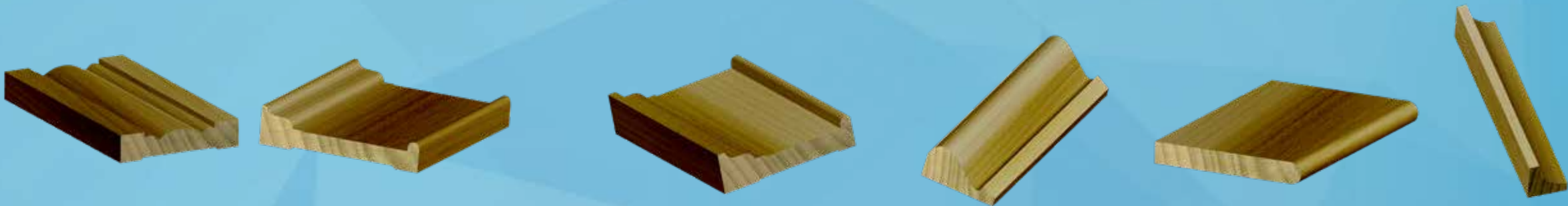


Current Catalog



WIDE SELECTION OF MOULDINGS

Over 3,000 Profiles Available
For Any Task At Hand



DOMESTIC SPECIES: HARDWOOD *

- 4/4 through 16/4. All lengths and grades
- Width sorted Red Oak, Hard Maple, and Poplar



IMPORTED AND SELECTED SOFTWOOD LUMBER *

A comprehensive assortment of Domestic and Imported Species

IMPORTED SPECIES

For your worldwide import sourcing needs, including the highest quality mills in Africa and South America. To ensure prompt supply of exotics and imports, Hardwoods import consolidation yard is located in Leland, North Carolina.



DOMESTIC SPECIES: SOFTWOOD



*AVAILABLE TO ORDER. MAY BE OUT OF CURRENT STOCK.

Servicing North America



27 LOCATIONS



5 LOCATIONS



34 LOCATIONS



Albuquerque, NM ²
505-924-2270

Charlotte, NC
704-494-0703

Kansas City, MO
816-531-0161

NY Metro – Long Island
631-242-4369

Savannah, GA
912-965-1061

Amarillo, TX
806-352-2382

Chattanooga, TN
423-332-1377

Kernersville, NC
336-993-8686

Olathe, KS
913-738-8074

Suwanee, GA
770-831-8128

Atlanta, GA
404-699-3900

Columbus, GA
706-565-5337

Las Vegas, NV
702-248-0050

Phoenix, AZ
602-252-3696

Tampa, FL
813-888-6824

Birmingham, AL
404-792-2290

Dallas, TX
214-638-5161

Milford, CT
203-878-9663

Portland, OR
503-692-3322

Wilmington, NC
910-794-7225

Blakeslee, PA
570-646-6724

Denver, CO
303-296-7260

Moonachie, NJ
201-807-9701

Roanoke, VA
540-857-0425

Boise, ID
208-336-3911

Gorham, ME
207-887-2070

Nashville, TN
615-885-0355

Salt Lake City, UT
801-972-9393

Boston Metro – Stoughton
781-341-9255

Houston, TX
713-692-3388

NY Metro – Bronx
718-589-9700

San Antonio, TX
210-657-5944



Toll-Free 1-855-650-3265

www.rugbyabp.com