

RUGBY
BIRMINGHAM
ALABAMA

RUGBY[®]
Architectural Building Products

NEW

FOR 2019

FIND OUT INSIDE

CATALOG

ARCHITECTURAL SPECIALTY PRODUCTS
DECORATIVE SURFACING
ARCHITECTURAL MILLWORK
CABINET HARDWARE AND ADHESIVES



America's Leading Distributor

of Architectural Wood Products, Decorative Surfacing, Architectural Millwork and Hardware located in 28 major US cities, servicing 35 states

WHY MAKE RUGBY YOUR SUPPLIER?

Rugby is Proven Reliability. Rugby is committed to fulfilling its promise to supply high quality products, competitively priced and delivered in a timely manner by industry professionals who know the value of exceptional service.

C O N T E N T S

PAGE	1.	2.	3.	4.	5.
	Laminate Countertops: VT Industries	Acrylic Solid Surface: Staron	Architectural Decor: Shinnoki	Architectural Decor: Querkus	Cabinets and Accessories: Rugby
PAGE	6.	7.	8.	9.	10.
	Architectural Decor: Echo Wood	Architectural Decor: Echo Wood PFP	Veneers and Edgebanding: Veneer Tech	Hardwood Plywood: Columbia FP	Hardwood Plywood: Timber Products
PAGE	11.	12.	13.	14.	15.
	Hardwood Plywood: Baltic Birch and Drawersides	Adhesives: Titebond and Choice Brands	Particleboard: Arauco and Roseburg	PVC Edgebanding: Doellken	Drawer Blanks: BHK of America
PAGE	16.	17.	18.	19.	
	Architectural TFL: Egger	Hardware: Salice and Knappe & Vogt	Hardwood Lumber	Hardwood Lumber	

FRONT COVER IMAGE:
Product: Staron
Project: Samsung Human Resources Development Institute





In addition to vanities, VT Industries is a leading manufacturer of countertops, offering homeowners dynamic options, including granite, VT TruQuartz,[™] VT Dimensions,[®] and VT VersaTop[™]. We also offer a variety of distinctive edge profiles designed to bring custom style to any kitchen, bath, or bar project.

VT Dimensions[®] countertops bring everything together in one seamless offering—from the slab-like core, to the naturally beautiful surface, to the premium edge profiles.

- State-of-the-art manufacturing assures your satisfaction every time
- 45-lb. industrial particle board as standard (meets HUD and government specs; ANSI approved)
- GREENGUARD Gold Certified for low chemical emissions
- PVA glue line provides strongest possible bond between particle board and laminate
- FSC[®] certified available on request

/ OPEN /



VT GeoScapes
Brochure

/ OPEN /

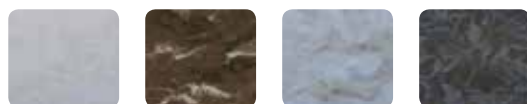


VT Dimensions
Brochure





4 of the 90 Colors Stocked by Rugby



Cloudbank Loam Ocean View Presto

staron®

100% Acrylic Solid Surface

Staron high-performance acrylic solid surface is known for excellent workability and easy maintenance. Its homogenous, color-through composition is non-porous and ultra-hygienic, making Staron an ideal surfacing option for a wide range of commercial interior applications and residential spaces.

- 10-year limited commercial warranty
- Ultra hygienic / non-porous
- Thermo-formable
- 90 design inspired color options available
- Integrated sinks and bowls available. All ADA compliant
- Sample sets of Staron are available along with individual color samples
- TSCA Title VI compliant

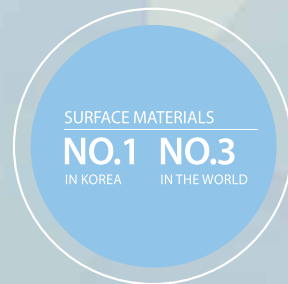
/ OPEN /



Brochure



Sample Binder Available



DECOSPAN.
Wood Solutions

SHINNOKI®

prefinished wood panels

Shinnoki offers prefinished wood veneered panels for architects and cabinet makers to design and create stylish and distinctive interiors. Unlike regular veneered panels, Shinnoki products are ready-to-use and as easy to work with as a melamine board, huge time and cost-saving but with the same unique look and feel that is typical for real wood veneer.

- Prefinished wood panels – 10% sheen matte finish
- Mix match technique to give natural appearance of solid wood
- Unique Designs created by a team of top European Designers
- Protective peel coat to protect finish
- 19mm 48.8" x 109.8" NAF MDF – 2 sided
- Prefinished 0.6mm edgeband and 1mm ABS edgeband available
- FSC® certified available on request
- TSCA Title VI compliant

/ OPEN /



Brochure



Edgebanding



9 of the 17 Colors Stocked by Rugby



Oak - Natural Vanilla Larch Walnut - Granite Walnut - Smoked



855-650-3265

www.rugbyabp.com

Rugby
Architectural Building Products

DECOSPAN.
Wood Solutions

QUERKUS

finest oak collection

Textured European White Oak & Reclaimed Panels

- Wire brushed & patented “saw effect” scratching
- Mixmatch technique to give natural appearance of solid wood
- Thick cut veneer for deep brushing and scratching
- European white oak – matched for color consistency
- Reclaimed veneer from railways in Europe
- 20mm 48.8” x 98.4” on MDF
- 0.8mm and 1mm edgeband available, brushed and scratched
- FSC® certified available on request
- TSCA Title VI compliant

/ OPEN /



Brochure

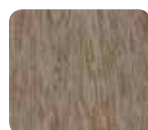


Edgebanding



Sample Binder
Available

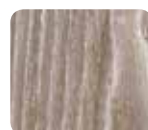
3 of the 14 Colors Stocked by Rugby



Allegro



Baltimore



Harlem

CABINET PRODUCTS

supplied by **RUGBY**
Architectural Building Products

Rugby is Your #1 Stop Cabinet Supplier!

Count on Rugby to deliver precisely engineered cabinets with your choice of traditional or contemporary door styles along with an extensive assortment of Rev-A-Shelf accessories. All our products are engineered from high quality materials and backed by comprehensive product warranties.

- Over 1,000 different cabinet accessory options
- Both contemporary and traditional door styles
- Comprehensive Rev-A-Shelf hardware program

You provide the space, and we'll provide all the cabinet and accessory solutions you need to get the job done right.

/ OPEN /



Cabinet Product
Catalog

/ OPEN /



Cabinet Accessory
Guide





4 of the 17 Colors Stocked by Rugby



EchoWood®

RECONSTITUTED WOOD VENEERS

- High quality, reconstituted, real wood veneer
- 17 popular patterns
- 0.6mm and 2.0mm matching edgebanding
- Veneer sheets or custom panel lay up
- Subject to volume and lead time, an infinite array of custom colors and patterns available
- NAUF, NAF options
- FSC® certified available on request

/ OPEN /



Brochure



Edgebanding



A&D Binder



Fan & Prefinished Sets

EchoWood® PFP

PREFINISHED PANELS

- Environmentally friendly wood product with accelerated fabrication times
- Consistent 2-sided UV finish with 15° sheen
- Eliminates the need for composing and laying-up the veneers
- Eliminates the need for a finishing line
- Provides environmentally sound finish
- FSC® certified available on request

/ OPEN /



Brochure



Edgebanding



A&D Binder



Fan & Prefinished Sets

4 of the 17 Colors Stocked by Rugby





Most Domestic and Many Exotic Species Available



**Premium Hardwood
Sheet Veneer & Edgebanding**

Veneer Technologies, Inc. manufactures high end decorative hardwood veneer faces. They carry most domestic species and have access to many exotic species from around the world. They currently operate ten continuous cross feed splicers, producing approximately 6.5 million finished square feet of face veneer per month.

SHEET VENEER

Manufactured with a select grade face veneer crosslinked to a variety of backers. Backers include 10 mil, 20 mil, 2-ply with cross-grain back, 3M peel-n-stick, polyback, true phenolic. Sizes are 4' x 8', 4' x 10', 4' x 12'. Custom sizes available.

/ OPEN /



Brochure

WOOD EDGEBANDING

- Standard wood edgebanding
- 500' rolls, fleeced and sanded
- 250' rolls, preglued EVA hotmelt
- UV prefinished, preglued or fleece backed
- Widths 1/2" to 2"
- Custom widths and lengths available

MELAMINE EDGEBANDING

- Standard colors
- 250' rolls
- Preglued

THICK WOOD EDGE ROLLS

- 328' rolls. Thickness 1mm, 1.5mm, 2mm, and 3mm

Please inquire about available widths and species



Founded in 1957, Columbia Forest Products is North America's largest manufacturer of hardwood plywood and hardwood veneer products. Columbia's decorative interior veneers and panels are used in high-end cabinetry, fine furniture, architectural millwork and commercial fixtures.

- Species: Various
- Face grades: A,B,C,D,E
- Back grades: 1,2,3,4
- Sizes: 4x6, 4x7, 4x8, 4x10, 5x8, 8x4
- Thickness: 1/8" to 1-1/4"
- Core types: JayCore®, KayCore®, veneer core, particleboard core (PBC), medium density fibercore (MDF), combination core, Classic Core®, lumber core
- UV Capabilities
- FSC® certified available on request



Edgebanding

/ OPEN /



Brochure

PUREBOND
PLYWOOD

/ OPEN /



Brochure

APPALACHIAN
TRADITIONS

/ OPEN /



Brochure

GRADING
GUIDE



The mark of
responsible forestry





Timber Products Company

THE TREMENDOUS RESOURCE®

- 3/8" up to 1-1/2" on standard panels
- 5' x 24' 20 opening press
- NAF, CARB Exempt
- MR10, MR50, and FR panels available
- ECC and SCS Certified Composite Panels
- Cal Green compliant
- Ampine NAF panels – Ampine NAF Industrial, Commercial, UnderLayment, Counter Top, Shelving
- Encore NAF panels – Encore, Encore FR, Encore MR 50, Encore HD, Encore Select, Encore Counter Top
- APEX NAF panels – APEX, APEX MR50, APEX FR, APEX Shelving
- All Encore and APEX panels carry a minimum of an MR10 moisture rating other than the Encore FR, and APEX FR
- Custom Cut To Size Program
- FSC® certified available on request

/ OPEN /



Brochure



Edgebanding

BALTIC BIRCH®

HARDWOOD PLYWOOD

- Direct importer - more choices and better quality control
- Production quality supervised by Hardwoods employees in Russia
- 3.0mm through 25.0mm
- 5' x 5', 4' x 8', 10' x 4' and 8' x 4' cross grain
- Grades ranging from C/C through B/B
- NAUF, Exterior, and Clear Finished
- Custom sizes and grades available
- Laminating blanks
- FSC® certified available on request

/ OPEN /



Brochure

BALTIC BIRCH®

DRAWERSIDES

- Prefinished or Unfinished
- Lengths 5' and 8' or precision trim available
- Thicknesses: 9, 12, 15, 18 mm
- Dado can be ordered to customer spec

/ OPEN /



Brochure



BALTIC BIRCH



Rugby is a full line distributor of all Titebond & Franklin products. Titebond I, II & III Wood Glue, Color matched caulking, Heavy Duty Construction Adhesive, Fast Set Polyurethane Construction Adhesive, FRP Solvent Free Adhesive, Weather Master Sealants, Ultimate MP, Silicones.

/ OPEN /



Brochure



Choice Brands Adhesives started in 2010 to provide industrial adhesives to a wide variety of markets and applications. Our company was founded by experienced adhesive veterans formerly with Imperial Adhesives / Sovereign Adhesives / Henkel Adhesives.

/ OPEN /



Current Catalog

We serve a wide variety of markets:

Cabinets and Millwork, Countertops, Office Furniture, Case Goods, Panel Lamination, Furniture, Foam Fabricating, Bedding, Sporting Goods, Commercial Roofing, Insulation, Waterproofing, Marine, Recreational Vehicle, Automotive Aftermarket

arauco

/ OPEN /



Brochure

- 1/2" - 1-1/8" thick, 4', 5' and 6' wide
- Cut to size and countertop sizes
- CARB2, ULEF, NAF, FSC® Certified
- Available in Water resistant, Fire rated and FSC® certified
- Products include Duraflake, Vesta, Terra



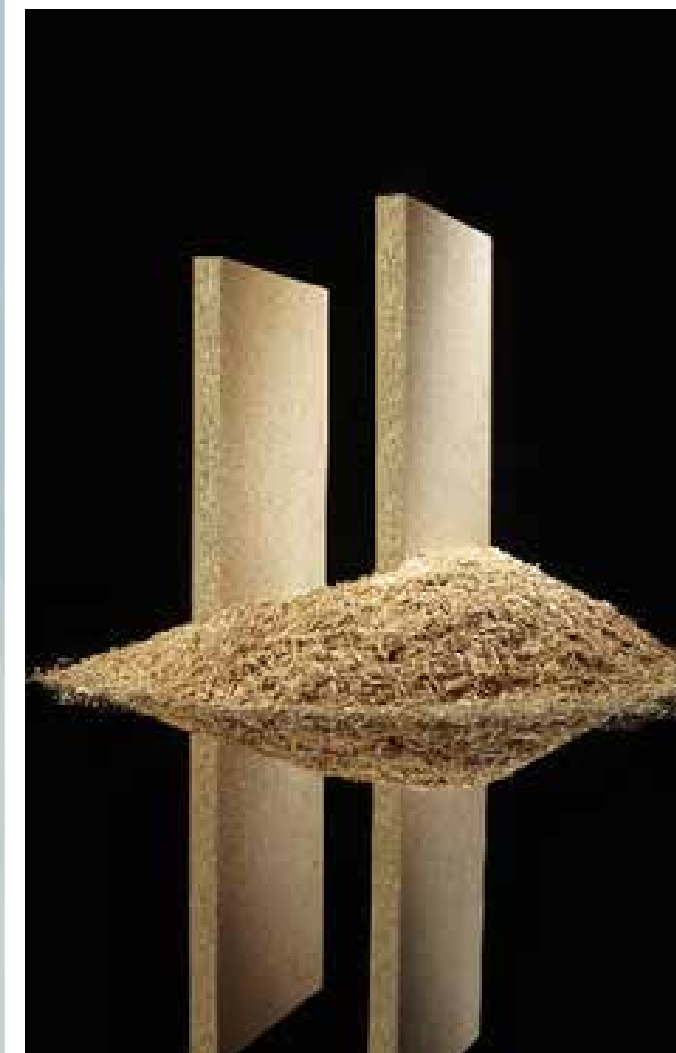
Roseburg produces one of the most popular machinable particleboard panels on the market today. Our UltraBlend panels are a premium-quality, mat-formed, multilayer wood particle board. These panels are made predominantly of precision-refined wood particles that are bonded with thermosetting resins.

UltraBlend features a highly refined smooth surface and tight uniform core with machinable edges and excellent dimensional stability. UltraBlend particleboard panels are designed for the demanding laminating and edge machining applications of today's precision woodworking industry.

/ OPEN /



Brochure



DÖLLKEN



OF AMERICA

PVC EDGEBOARDING

Doellken PVC Edgebanding is the finest, most consistent product available on the market today. Typical applications of PVC Edgebanding include residential and office furniture, institutional caseworks (laboratories, hospitals, medical offices, schools, etc.), store fixtures, kitchens, locker rooms and numerous others. Doellken Edgebanding comes in thicknesses of .018" (0.45 mm) to 3 mm and widths ranging from 5/8" (16mm) to 2-3/16" (55mm).

- The SpecLine and DoellkenFlex program are available from stock in 5 different sizes
- All edgebanding products are available in solid colors, designer patterns and woodgrains
- With 11 different embosses, your edgebands will have a natural appearance and a deep emboss feel

/ OPEN /



Brochure

BHK knows that selecting a drawer manufacturer is a major decision. You want to make sure you get the quality your project demands, the price that affords you a profit and the service you deserve. BHK of America has manufactured quality drawer systems for more than 30 years and has built its success on service, value and superior craftsmanship.

To maximize the functionality of your drawer space BHK offers multiple storage and convenience options. In order to build the highest quality wood drawers, you have to start with the finest quality materials. For that, BHK select from the most beautiful domestic species including Maple, Tilia, Cherry and Red Oak.

- Tilia bottom thickness - 1/4", Bottom Thickness for Maple, Cherry & Red Oak is 3/8"
- Custom Heights Ranging from 1 1/2" to 15"
- English Dovetail Construction
- 3/8" Bottoms made from VC Plywood
- Durable Clear Satin Finish is Standard (Unfinished or staining available upon request)
- Standard Eased Top Edge (Straight top edge available upon request)
- Front Drilling
- White Vinyl Wrapped
- Baltic Birch

/ OPEN /



Brochure

/ OPEN /



Brochure



CHOOSE FROM A LARGE VARIETY
OF BHK BLANK OPTIONS

4 CUTS ► ADD BOTTOM ► ASSEMBLE ► DONE



35 Colors In Stock and Available Immediately

All Available 297 Colors Can Be Ordered On Request.
Please Contact Your Southeast Rugby Branch For More Details.



Shorewood



Anthracite Linen



Attic Wood



White Cape Elm



Natural Halifax Oak



Thermo Pine



PerfectSense Gloss Lacquered Boards

Based on EGGER's proven MDF quality PerfectSense Gloss represents the premium category of high-gloss decorative lacquered boards.

With its exceptional level of reflection, exceptionally smooth finish and unique brilliance, PerfectSense Gloss represents pure luxury.

Benefits:

- High depth effect and mirror gloss finish
- Supports economic manufacturing
- Premium appearance through the glasslike finish
- High resistance to micro-scratches ensures long lasting brilliant surface

Areas of application: Residential and commercial areas as well as retail

Feelwood synchronized pore (EIR) on TFL

EGGER's Feelwood range of decors specially designed with multi-layers of papers to create a depth of texture often seen with solid wood. These decors represent the premium category among the 223 TFL decors within the EGGER decorative collection.

Benefits:

- CARB2/TSCA conformity and FSC® Mix Credit certified products are available on request
- No compromise in appearance and performance due to available décor matching laminate and edging materials
- Offer the best of two worlds: Wood reproductions designed by nature with a high-quality and lightfast finish
- Benefit from short lead times through local stock

/ OPEN /



Brochure

/ OPEN /



Divisional
Stock Program



Decorative Collection
Folder



Edgebanding
Available



Established in 1989, Salice America reflects the leadership claimed by the European parent company for over 50 years.

A complete product line of concealed hinges, drawer slides and sliding door systems has made our company the technology leader of the market, a never ending task requiring solid engineering and innovative mentality.

/ OPEN /



Silentia
Hinges

/ OPEN /



Futura
Runners

/ OPEN /



Pacta
Hinge

/ OPEN /



Wind
Lift System



KNAPE & VOGT®

Knappe & Vogt design and manufacture precision, Euro-style and utility slide systems; wall-attached shelving for commercial, home and garage applications; kitchen, closet and bath storage; office and healthcare ergonomics products and specialty hardware. We offer these products under several well-known brand names: KV®, KV Waterloo®, HyLoft®, Real Solutions for Real Life®, John Sterling™ and Shelf-Made®.

/ OPEN /



Brochure



For every type of movement... the answer is Salice. A comprehensive range of products that combines excellence in research-based design and technical expertise to provide solutions for every domestic furniture application.

- 1 - Hinges and mounting plates
- 2 - Lifting systems
- 3 - Sliding systems
- 4 - Runners
- 5 - Drawers

SALICE





DOMESTIC SPECIES: HARDWOOD

- 4/4 through 16/4. All lengths and grades
- S2S, SL1E and ripping available
- Width sorted Red Oak, Hard Maple, and Poplar
- S4S, Sanding and Custom millwork packages including custom knife grinding available



DOMESTIC SOFTWOOD AND IMPORTED SPECIES

A comprehensive assortment of Domestic and Imported Options

DOMESTIC SPECIES: SOFTWOOD



IMPORTED SPECIES

For your worldwide import sourcing needs, including the highest quality mills in Africa and South America. To ensure prompt supply of exotics and imports, Hardwoods import consolidation yard is located in Leland, North Carolina.



Servicing North America



25 LOCATIONS



5 LOCATIONS



31 LOCATIONS



Albuquerque, NM
505-924-2270

Chattanooga, TN
423-332-1377

Kernersville, NC
336-993-8686

Phoenix, AZ
602-252-3696

Tampa, FL
813-888-6824

Amarillo, TX
806-352-2382

Columbus, GA
706-565-5337

Las Vegas, NV
702-248-0050

Portland, OR
503-692-3322

Wilmington, NC
910-794-7225

Atlanta, GA
404-699-3900

Dallas, TX
214-638-5161

Los Angeles, CA
909-466-7315

Roanoke, VA
540-857-0425

Blakeslee, PA
570-646-6724

Denver, CO
303-296-7260

Milford, CT
203-878-9663

Salt Lake City, UT
801-972-9393

Boise, ID
208-336-3911

Fort Worth, TX
817-831-6241

Moonachie, NJ
201-807-9701

San Antonio, TX
210-657-5944

Boston Metro – Stoughton
781-341-9255

Gorham, ME
207-887-2070

NY Metro – Bronx
718-589-9700

Savannah, GA
912-965-1061

Charlotte, NC
704-494-0703

Houston, TX
713-692-3388

NY Metro – Long Island
631-242-4369

Suwanee, GA
770-831-8128



Toll-Free 1-855-650-3265

www.rugbyabp.com