

**BOISE**

**RUGBY®**  
Architectural Building Products

**NEW** *FOR*  
*2021*



ARCHITECTURAL SPECIALTY PRODUCTS  
DECORATIVE SURFACING  
ARCHITECTURAL MILLWORK  
CABINET HARDWARE AND ADHESIVES

**CATALOG**

**FIND OUT INSIDE**



## America's Leading Distributor

of Architectural Wood Products, Decorative Surfacing,  
Architectural Millwork and Hardware located in 28 major  
US cities, servicing 35 states

## WHY MAKE RUGBY YOUR SUPPLIER?

Rugby is Proven Reliability. Rugby is committed to fulfilling its promise to supply high quality products, competitively priced and delivered in a timely manner by industry professionals who know the value of exceptional service.

FRONT COVER IMAGE:

Product: Querkus Retro Baltimore Oak  
Project: House Interior by Bob Manders Architecture



855-571-9663

[www.rugbyabp.com](http://www.rugbyabp.com)

# TABLE of CONTENTS

EGGER: Feelwood Synchronized Pore	4
EGGER: Stock Options	5
Querkus: Textured European White Oak	6
Shinnoki: Prefinished Wood Panels	7
Echo Wood: Reconstituted Wood Veneers	8
Echo Wood: Prefinished Panels	9
Nordus: Contemporary Softwood Panels	10
West Fraser MDF	11
Forever Barnwood: Flooring, Rich & Rustic Mantels, Beams and Posts	12
MIRLUX Premium Panel	13
Domestic Species: Hardwood	14
Domestic Softwood and Imported Species	15
Baltic Birch: Hardwood Plywood	16
Baltic Birch: Drawersides	17
Blum: Hinges and Drawer Systems	18
Quickscrews: Woodworking Screws	19
Mt. Baker: Industrial Hardwood Plywood	20
Pride Industrial: Decorative and Functional Hardware	21
Döllken: PVC Edgebanding	22
Mirka: Abrasives	23
Famowood: Wood Filler, Thinner, Epoxy Coating	24
Mohawk Finishing Products	25
Titebond: Wood Glue, Construction Adhesives	25
Boise Cascade: Engineered Wood Products	26
John Boos Countertops	27
Veneer Tech: Premium Hardwood and Edgebanding	28
Alvic Grupo: Furniture and Decoration Panels	29
Cabinets	30/32



The mark of  
responsible forestry

Look for  
FSC® Certified  
Products



855-571-9663

[www.rugbyabp.com](http://www.rugbyabp.com)





## EGGER

### Feelwood synchronized pore (EIR) on TFL

EGGER's Feelwood range of decors specially designed with multi-layers of papers to create a depth of texture often seen with solid wood. These decors represent the premium category among the 297 TFL decors within the EGGER decorative collection.

#### Benefits:

- CARB2 conformity
- No compromise in appearance and performance due to available décor matching laminate and edging materials
- Offer the best of two worlds: Wood reproductions designed by nature with a high-quality and lightfast finish
- Benefit from short lead times through local stock
- FSC® certified available on request
- TSCA Title VI compliant

### PerfectSense Gloss Lacquered Boards

PerfectSense lacquered boards are much more than a conventional melamine-faced MDF board. They epitomise the next generation of matt or gloss textures and represent a new premium standard of board.

Manufactured using a sophisticated lacquering process that is applied with precision to the surface, PerfectSense Gloss offers an exceptional reflective effect and smooth finish. PerfectSense Matt, by contrast, feels warm and velvety. Compared to many other lacquered boards they are both scratch-resistant and robust.

#### Benefits:

- High depth effect and mirror gloss finish
- Large board format of 2800 x 2070mm supports economic manufacturing
- Premium appearance through the glasslike finish
- High resistance to micro-scratches ensures long lasting brilliant surface
- Areas of application: Residential and commercial areas as well as retail

This branch also carries HPL products



Click Here To View Brochure



Decorative Collection Folder



Edgebanding Available

## EGGER

### Stock Options

Exact matching TFL, HPL and Edgebanding are available through Hardwoods as your one stop shop. Exact match edgebanding and laminates eliminate the need to source a close match.

In stock colors are available on your next delivery, with the top colors stocked here in the Boise region, and all 297 decors available within 1 - 3 weeks.

- HPL
- Edgebanding
- TFL

#### Available Stocking Colors

All Available Decors Can Be Ordered On Request  
Please Contact Your Local Hardwoods Branch For More Details



Click Here To View Brochure



Decorative Collection Folder



Edgebanding Available





DECOSPAN.  
Wood Solutions

QUERKUS<sup>®</sup>  
finest oak collection

## Textured European White Oak & Reclaimed Panels

- Wire brushed and patented “saw effect” scratching
- Mixmatch technique to give natural appearance of solid wood
- Thick cut veneer for deep brushing and scratching
- European white oak – matched for color consistency
- Vintage Intense: Embossed is available
- Reclaimed veneer from railways in Europe
- 3/4” 4’ x 8’; 4’ x 10’ on MDF
- 0.8mm and 1mm edgeband available, brushed and scratched
- FSC<sup>®</sup> certified available on request
- TSCA Title VI compliant

### 11 Available Colors



Adagio



Allegro



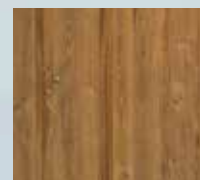
Vivace



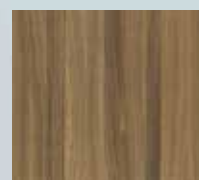
Baltimore



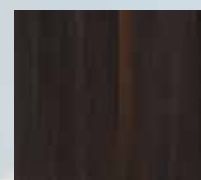
Harlem



Hoboken



Smoked Arabica



Smoked Robusta



Edgebanding



Click Here To View  
brochure

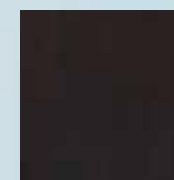
DECOSPAN.  
Wood Solutions

SHINNOKI<sup>®</sup>  
prefinished wood panels

## Prefinished Wood Panels

- Prefinished wood panels – 10% sheen matte finish
- Mixmatch technique to give natural appearance of solid wood
- Europe's top designers put together range of selections
- Protective peel coat guards against marks and scratches.
- 3/4” 4’ x 9’ NAF MDF – 2 sided
- Coordinating Products include: Acoustic Panels and Slats, Planks and Tiles for walls
- Prefinished 0.6mm edgeband and 1mm ABS edgeband available
- FSC<sup>®</sup> certified available on request
- TSCA Title VI compliant

### 16 Available Finishes



Chocolate Oak



Desert Oak



Ivory Oak



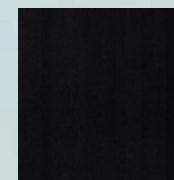
Manhattan Oak



Milk Oak



Natural Oak



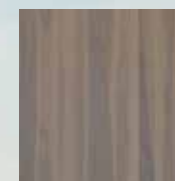
Raven Oak



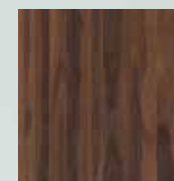
Chalk Ash



Frozen Walnut



Granite Walnut



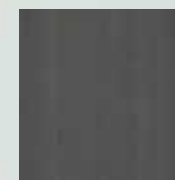
Smoked Walnut



Stardust Walnut



Cinnamon Triba



Mineral Triba



Stone Triba



Dusk Fraké



Edgebanding



Click Here To View  
Brochure



Click Here To View  
Brochure



Click Here To View  
Brochure



## EchoWood®

RECONSTITUTED WOOD VENEERS

- High quality, reconstituted, real wood veneer
- 16 popular patterns
- 0.6mm and 2.0mm matching edgebanding
- Veneer sheets or custom panel lay up
- Subject to volume and lead time, an infinite array of custom colors and patterns available
- NAUF and NAF options
- FSC® certified available on request

### 16 Colors Available



Fan & Prefinished Sets



A&D Binder



[Click Here To View Brochure](#)



Edgebanding  
All Natural - All UV - ABS

## EchoWood PFP®

PREFINISHED PANELS

- Consistent 2-sided finish
- 16 colors to choose from
- Contemporary European matte finish (15° sheen)
- Accelerated fabrication times
- High quality, environmentally friendly UV cured enamel that contains no VHAPS and is extremely low in Volatile Organic Compounds (VOC's)
- FSC® certified available on request

### 16 Colors Available



Fan & Prefinished Sets



A&D Binder



[Click Here To View Brochure](#)



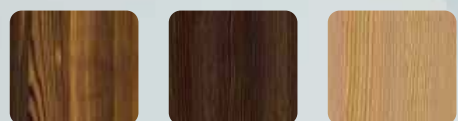
Edgebanding  
All Natural - All UV - ABS







### Available Colors



Larch – Autumn Larch – Winter Larch – Spring



Spruce – Clean Pine – Wild

DECOSPAN  
Wood Solutions

# Nørdus

the scandinavian collection

## Contemporary Softwood Panels

For the 'Nørdus' collection, only the best softwood and birchwood is collected and carefully processed into finely cut veneer. This way, the raw materials are optimized.

Advanced surface treatments reinforce the unique beauty of wood and highlight its 3D aspect. A team of trend watchers suggested various trendy finishing options such as metallic shades, ash grey or neutral white accents allowing 'Nørdus' to be integrated in every interior.

- Advanced surface treatments highlight 3D aspect
- Unfinished panels are easily customized to cover broad color palette range
- Scandinavian influence integrated into modern design
- Mixmatch technique to give natural appearance of solid wood
- 19mm x 4' x 9' G2S Panels
- Matching .6mm thick edgebanding
- Matching 4' x 9' flexible veneer



Click Here To View Brochure



Edgebanding



Sample Binder Available



Flex Veneer

A Nørdus panel is composed of a top layer of real wood veneer, a core of 18 mm MDF and a backing of real wood veneer for stability reasons. The top layer is always a jointed veneer sheet in accordance with the chosen design, composed using our mix match technique.



West Fraser medium density fiberboard (MDF) panels are composed of 100% western white softwoods that have a consistent light sandy color. The purity and long fibres associated with this material allow for deep, detailed profiling and smooth machining for easier and better finishing.

An added benefit of our panels is the light color of our MDF reduces color show-through when painting. The result is significantly longer tool life.

Ranger Board is western softwood-based MDF that is well known for its machining and painting capabilities. Ranger has a multi-opening press of 6' x 24', which enables the production of a wide range of thicknesses and densities from 3/8" through to 1 1/2".

- Used for furniture, cabinetry, flooring, and millwork. MDF is manufactured from ligno-cellulosic fibres (wood and plant dry matter) bonded together with a formaldehyde containing binder
- Standard finish on all panels is 150 grit
- Eco® and FSC® certified
- Moisture content: Average moisture content of finished panels as shipped is 4 – 6%
- Finished sizes available: Width 48" to 73", Length 48" to 205"



Click Here To View Brochure



Click Here To View Brochure







### Flooring

This type of flooring has character, created through saw marks, unique markings, staining, weathering, and patina - all giving the appearance of wear and use.

These characteristics are reproduced authentically in our manufacturing process and makes every flooring project truly unique and affordable.



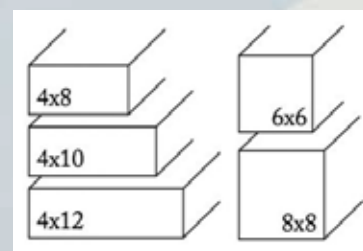
### Rich & Rustic mantels

Mantels are available in many lengths, depths, and thicknesses. A defining characteristic of mantels are the knots and deep cracks that are found in each hand picked masterpiece. These cracks and knots are common in reclaimed beams found in harsh environments and widely variant environmental conditions. Mantels are kiln dried just as our other products to ensure stability.



### Beams and Posts

We have the rustic barnwood beams and posts your project needs. Forever Barnwood wooden beams undergo a patent pending treatment to achieve the warm, honest look of rustic design. You can use them for fireplace mantels, structural beams for pergolas, and everything in between.



MIRLUX Premium Panel with its sleek, modern surface, available in high gloss or super matte finish with a color richness with depth and clarity, is a sustainable, low maintenance, durable and scratch resistant solution for kitchen and bath cabinets, interior casework, closets furniture, wall panels, retail fixtures and displays and other vertical surface applications.

MIRLUX is constructed of PET (Polyester – Polyethylene Terephthalate) laminated to super smooth, low surface variance TSCA Title VI Certified medium density fiberboard (MDF). The surface PET is co-extruded as .4mm film that is laminated with PUR adhesive that results in a water-resistant seal that won't delaminate and allows MIRLUX to have the smoothest surface possible.

### Features

- Super Scratch Resistant (SSR) coating, a hard coat finish for excellent scratch resistance
- Impact and shatter resistant
- Water resistant
- Hygienic, does not promote bacterial growth
- Stain and UV resistant
- Won't crack, peel, flake, or delaminate
- Edgebanding is stain, scratch and fingerprint resistant due to the SSR (Super Scratch-Resistant) coating. The solid color edgebanding are durable with a silky smooth texture. Ideal for high traffic areas.

### High Gloss Panels







## DOMESTIC SPECIES: HARDWOOD

- 4/4 through 8/4. All lengths and grades
- S4S, Sanding and Custom millwork packages
- S2S, SL1E and ripping available



\* **Rustic Species** – Cherry/Hickory/Hard Maple/Red Oak/White Oak/Walnut

Grade is designed for rustic and distressed furniture and cabinetry applications. 75% of the board includes the natural characteristics inherent in the species and is unselected for color.

(Cherry has allowable gum pockets, pin knots and color variation on either face)



## DOMESTIC SOFTWOOD AND IMPORTED SPECIES

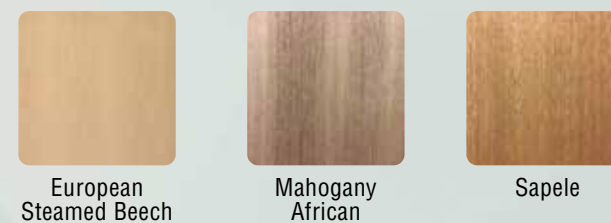
A comprehensive assortment of Domestic and Imported Options

### DOMESTIC SPECIES: SOFTWOOD

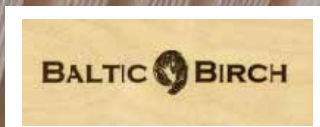


### IMPORTED SPECIES

For your worldwide import sourcing needs, including the highest quality mills in Africa and South America. To ensure prompt supply of exotics and imports, Hardwoods import consolidation yard is located in Leland, North Carolina.







# BALTIC BIRCH

## HARDWOOD PLYWOOD

### Excellent Raw Material Resource

Baltic Birch is offered from both non certified and FSC® certified forests. Russia contains more than a fifth of the world's forests, making for an abundant supply of raw material.

### 100% Hardwood Fiber

Made from 100% Birch hardwood veneers and nearly void free components, this material offers exceptional hardness and specific gravity, making Baltic Birch plywood amongst the strongest and most dimensionally stable panels available.

### Multi-ply Construction

The construction of BALTIC BIRCH plywood has 30% more ply than conventional domestic plywood. The combined results of the Birch hardwood fiber and the multi-ply construction make for a panel that is specially designed to endure heavy loads or high impact. Baltic Birch is also available in unidirectional construction from 9mm-30mm thick.

- Direct importer – more choices and better quality control
- Production quality supervised by Hardwoods employees in Russia
- 3.0mm through 25.0mm
- 5' x 5', 4' x 8'
- Grades: B/BB, BB/BB, BB/CP
- NAUF, FSC®, CARB2, exterior and clear finished
- Custom sizes and grades available
- Laminating blanks



[Click Here](#) To View Brochure

# BALTIC BIRCH

## DRAWERSIDES

### Excellent Raw Material Resource

Baltic Birch is offered from both non certified and FSC® certified forests. Russia contains more than a fifth of the world's forests, making for an abundant supply of raw material.

### 100% Hardwood Fiber

Made from 100% Birch hardwood veneers and early void free components, this material offers exceptional hardness and specific gravity, making Baltic Birch plywood amongst the strongest and most dimensionally stable panels available.

### Multi-ply Construction

The construction of Baltic Birch plywood has 30% more plys than conventional domestic plywood. The combined results of the Birch hardwood fiber and the multi-ply construction make for a panel that is specially designed to endure heavy loads or high impact. Baltic Birch is also available in unidirectional construction from 9mm-30mm thick.

- Available upon request
- Prefinished or Unfinished
- Lengths 5' and 8' or precision trim available
- Thicknesses: 9mm, 12mm, 15mm, 18mm
- Dado can be ordered to customer specifications



[Click Here](#) To View Brochure





Blum is an international company that produces hinge-, lift- and runner-systems and the appropriate assembly tools for the cabinet making and furniture industry with exports to over 120 countries.

Blum does a great deal of testing. Their hinge systems meet or exceed ANSI/BHMA grade 2 requirements. Blum drawer systems meet or exceed ANSI/BHMA grade 1 requirements. Their Quality Management System is also ISO 9001 certified.

### AVENTOS Lift System

Opening and closing upper cabinet doors has never been so easy. With AVENTOS doors fold up and out of the way. They can be stopped in any location, meaning the handle always stays within reach.

- AVENTOS HF: bi-fold doors lift up and out of the way
- AVENTOS HS: lifts doors up and over the cabinet
- AVENTOS HL: doors lift parallel to the cabinet
- AVENTOS HK: stay lifts swing up and out of the way



[Click Here To View Brochure](#)



[Click Here To View Brochure](#)

### Concealed Hinges

COMPACT BLUMOTION hinges were specifically designed for face frame cabinets. The soft close feature is built right into the hinge cup, and it can even be deactivated for small or light doors. With COMPACT BLUMOTION, doors close silently every time.

### TANDEM Plus BLUMOTION

TANDEM Plus BLUMOTION runners are the latest advancement in concealed runner technology. They offer four-dimensional adjustment, excellent stability and minimal sag; all while maintaining smooth running action and unmatched soft close.

### LEGRABOX Drawer System

LEGRABOX is Blum's newest premium metal drawer system. It is available in two luxurious finishes that complement a wide variety of styles and color.

### MOVENTO Runner System

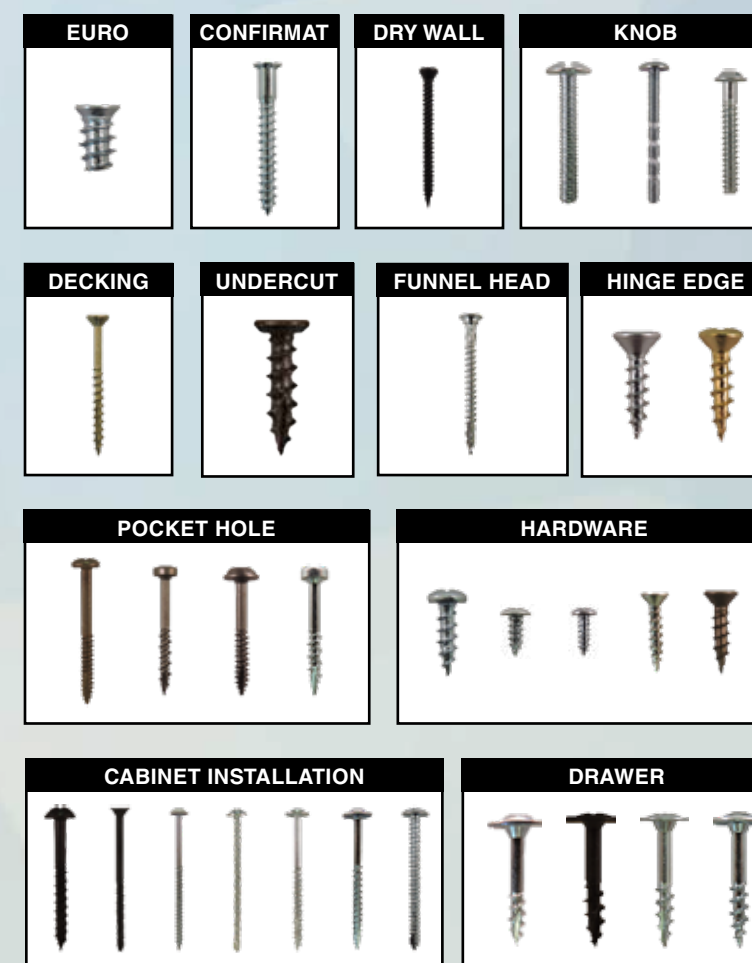
MOVENTO offers a synchronised feather-light glide, 4-dimensional front adjustment, dynamic carrying capacities of 40 and 60 kg, high stability and very good sag values. MOVENTO can be combined with the SERVO-DRIVE electrical motion support system for handle-less fronts.



For proper construction and assembly, it is critical to purchase wood screws, cabinet screws, hardware screws, drive bits, nut setters, and other woodworking products that will guarantee a sturdy hold, easy installation and removal, and an attractive appearance for any project. You deserve something durable, yet affordable, and the perfect fit for your particular plan.

Quickscrews offers high quality woodworking screws for cabinet and furniture construction and assembly.

### 54 Configurations



**NOTE:** Screws do not scale proportionately against each other.



[Click Here To View Brochure](#)







## Industrial Hardwood Plywood

- Fast turnaround on orders
- All production is custom
- No minimums

Proprietary or specified panels for your market with continuity.

- FSC® Certified
- CARB II Certified exempt
- NAF

## Veneer Core (Northwest Whitewoods)

- 4' x 6', 4' x 7', 4' x 8', 4' x 10'

## PBC

- Standard sizes, 4' x 8' and 4' x 10'
- 3/8" - 1 1/2"

## MDF

- Standard sizes, 4' x 8' and 4' x 10'
- 5/32" - 1 1/4"

## Composites Available

- Fire rated
- No Added Formaldehyde
- Medex
- Medite II
- Ultralite
- FSC® Certified
- MR10 PBC

## Baltic Birch Solid Core (Europly)

- 4' x 8', 4' x 10'
- 1/4" - 1 1/4"



[Click Here To View Brochure](#)



## PRIDE INDUSTRIAL

DECORATIVE FUNCTIONAL HARDWARE & MORE

Pride Industrial is a premier manufacturer of hardware for the woodworking industry. We firmly believe in top quality products and the most reliable service.

Our extensive product lines include: elegant designs of handles and knobs for cabinetry and furniture; hand carved wood such as corbels, bar brackets, island posts, onlays and vanity legs. Functional hardware that includes lazy susan's, shelf standards and brackets; a full line of concealed hinges; slides, including 3/4" extension, full extension, undermount and soft self close; shutter hardware and desk grommets.

### Decorative Collection



[Click Here To View Brochure](#)



[Click Here To View Brochure](#)



## DECORATIVE



## FUNCTIONAL





# DÖLLKEN

## PVC Edgebanding

Doellken PVC Edgebanding is the finest, most consistent product available on the market today. Typical applications of PVC Edgebanding include residential and office furniture, institutional case goods (laboratories, hospitals, medical offices, schools, etc.), store fixtures, kitchens, locker rooms and numerous others. Doellken Edgebanding comes in thicknesses of .018" (0.45 mm) to 3 mm and widths ranging from 5/8" (16mm) to 2-3/16" (55mm).

- The SpecLine and DoellkenFlex program are available from stock in 5 different sizes
- All edgebanding products are available in solid colors, designer patterns and woodgrains
- With 11 different embosses, your edgebands will have a natural appearance and a deep emboss feel



[Click Here To View Brochure](#)

# MIRKA

## NET Abrasives

Mirka's innovative NET sanding concept is unlike any other. The patented construction consists of a dense network of fabric threads onto which the abrasive grit is bonded. This open weave, net structure means no dust particle is more than 0.5mm from a dust extraction hole.

## Film-Backed Abrasives

Mirka's film backing material creates a flexible and smooth abrasive surface, compared to paper backing. It offers outstanding performance on hard tooling gelcoats and scratch resistant clearcoats.

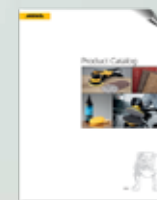
## Foam Abrasives

Abralon's flexible construction creates a smooth sanding pattern on contoured surfaces and edges while minimizing the risk of pressure marks. The flexible weave also allows water and air to pass freely, making it suitable for both dry and wet sanding.

## DEROS Orbital Sander

Mirka® Deros is the most compact, ergonomic and powerful sander in its class. Thanks to its high efficiency patented brushless motor, the Mirka® Deros also has plenty of power to get the job done quickly.

Please see the brochure for a collection of Mirka® Pneumatic Sanders, Foam Paper-Backed Abrasives, Cloth-Backed Abrasives, Non-Woven Abrasives, Belts, Polishing Compounds, and Dust-Free Sanding Accessories.



[Click Here To View Brochure](#)







### Wood Filler

FAMOWOOD Original Wood Filler has been the choice of professional woodworkers for over 70 years! It doesn't matter whether you are masking small or large defects, FAMOWOOD can handle the job. It spreads smoothly into cracks and holes, takes stains and paints evenly and resists cracking. Perfect for any type of custom wood project.

- Dries in 30 minutes
- Won't crack or shrink
- Can be sanded, drilled or planed
- Stainable and paintable

### Wood Filler Thinner

Wood Filler Thinner is designed to keep FAMOWOOD Original wood filler in top working condition. It will restore wood filler to its original consistency and workability. It also eliminates virtually any waste and extends the life of the wood filler.

- Outstanding UV protection
- Tough – designed for use on hardwood floors, floor boards, boats and other high traffic surfaces
- Abrasion and scratch resistant
- Fast drying – dries in half the time
- Easy-to-use – no mixing required

### Glaze Coat Epoxy Coating

This ultra-clear, high gloss finishing epoxy is ideal for home improvement and craft projects. FAMOWOOD Glaze Coat is a pour-on epoxy coating that can be used on most surfaces – rough or smooth, stained or painted. It's great for coating tables or bar tops, preserving photographs or imbedding decorative items. Just one coat equals 70 coats of varnish!

- Easy 1:1 mixing ratio
- Versatile – use on any non waxy material
- Self-leveling – minimal spreading required
- Indoor use
- Resists temperatures up to 120° F



With our modern laboratory facilities, we are in a position to formulate and furnish you with almost any desired item and any special shade and color. We are always ready to help with whatever finish, patching or repairing difficulties you have.

The Mohawk Finishing catalog includes high quality touch up, repair and finishing products for wood, vinyl and leather. This catalog is designed to help your business get the job done efficiently and within budget.



[Click Here To View Brochure](#)



Rugby is a full line distributor of all Titebond & Franklin products. Titebond I, II & III Wood Glue, Color matched caulking, Heavy Duty Construction Adhesive, Fast Set Polyurethane Construction Adhesive, FRP Solvent Free Adhesive, Weather Master Sealants, Ultimate MP, Silicones.



[Click Here To View Brochure](#)







## Boise Cascade

### Engineered Wood Products

#### 45# Industrial Particleboard

It's light without the sacrifice. Boise Cascade 45# Industrial Particleboard provides manufacturing and shipping economies that translate into lower purchase costs. Boise Cascade Company. Keep the quality in your board.

An engineered composite panel wood product made from 100% recycled Ponderosa pine and associated species of western wood particles formed and bonded with an interior resin.

Meets ANSI standard M-1.

#### Thickness Range

- 1/2" through 1" or 12mm through 25mm

We also manufacture pre-cut countertops and bullnose/edge-filled shelving (SUPER SHELF®). Both items are offered in 3/4" thickness and are produced to 45# industrial specifications.

A number of custom widths and lengths are available in each product.

#### Standard Sizes

- Counter Top: 25", 30" and 36" widths and 8', 10' and 12' lengths
- SUPER SHELF®: 12", 16", 24" full widths and 8', 10' and 12' lengths
- Inquire about custom sizes



[Click Here](#) To View Brochure



#### Boos Block Countertops

Built on a history of over 125 years of American craftsmanship, Boos® butcher block surfaces fill your kitchen with timeless tradition in countertop appearance while maintaining a natural food safe element for food preparation.

#### Ultra Premium

Kitchen Countertops/Island Tops (KCT Models)

#### Standards:

- Width: 25" - 48"
- Length: 12" - 145"
- Thickness: 1-1/2", 1-3/4", 2-1/4", 3"

#### Detached Riser Options

The Boos® Extra 1" Edge: All Boos® countertops in standard lengths of 8' or longer are manufactured with 1" added to the length.



Northern Hard Rock Maple



American Black Walnut



Blended Northern Hard Rock Maple



Blended American Black Walnut



American Cherry



Appalachian Red Oak



Blended American Cherry



Blended Appalachian Red Oak

#### End Grain Island Tops

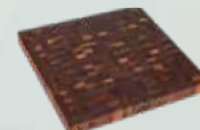
Kitchen Countertops (BBIT Models)

#### Standards

- Width Sizes: 25" - 38"
- Length Sizes: 24" - 60"
- Thickness: 2-1/4", 3", 4", 7"



Northern Hard Rock Maple



American Black Walnut



American Cherry

#### Stainless Steel

Kitchen Countertops

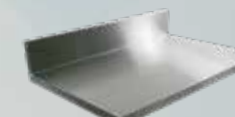
#### Standards

- Width: 25", 32", 38"
- Length: 24" - 120"

Options: Integral backsplash offering on 25" depth models. Separate, detached 16GA. stainless available for flat backsplash option.



Stainless Steel



Stainless Steel with Backsplash



#### Blended

Kitchen Countertops (KCT-BL-Models)

#### Standards:

- Width: 25" - 42"
- Length: 12" - 145"
- Thickness: 1-1/2"

#### Detached Riser Options

The Boos® Extra 1" Edge: All Boos® countertops in standard lengths of 8' or longer are manufactured with 1" added to the length. This is another exclusive Boos® bonus offering for fabricating a long block into two shorter blocks, allowing room for the saw cut, yet maintaining the full length of both block requirements.





#### Most Domestic and Many Exotic Species Available



### Premium Hardwood Sheet Veneer & Edgebanding

Veneer Technologies, Inc. manufactures high end decorative hardwood veneer faces. They carry most domestic species and have access to many exotic species from around the world. They currently operate ten continuous cross feed splicers, producing approximately 6.5 million finished square feet of face veneer per month.

#### Sheet Veneer

Manufactured with a select grade face veneer crosslinked to a variety of backers. Backers include 10 mil, 20 mil, 2-ply with cross-grain back, 3M peel-n-stick, polyback, true phenolic. Sizes are 4' x 8', 4' x 10', 4' x 12'.

Custom sizes available.

#### Wood Edgebanding

- Standard wood edgebanding
- 500' rolls, fleeced and sanded
- 250' rolls, preglued EVA hotmelt
- 3M peel-n-stick
- UV prefinished, preglued or fleece backed
- Widths ½" to 2"
- Custom widths and lengths available

#### Thick Wood Edge Rolls

- 328' rolls. Thickness 1mm, 1.5mm, 2mm, and 3mm

Please inquire about available widths and species.



Click Here To View  
Brochure



Sample Binder Available



Laminated Samples  
Available



### Feel the Innovation

Alvic places at the disposal of designers, architects and interior designers a collection of colors, designs and fantasies that set the trend for the next few years. Their products, in their various service options (panel format or finished piece) can be applied to all kinds of furniture and decorations.

Alvic has developed two new module collections, Classic and Avantgarde, which bring together aesthetics, ergonomics and versatility.

This new collection includes features in line with the ergonomic and functional needs that users' demand and involves yet another example of how the company is able to adapt to market requirements.

The modules are offered in trend-led colors and designs that can combine the inside of the furniture with the different ranges, LUXE, ZÉNIT and SYNCRON as well as with the EVOLUTION DRAWER, creating a harmonious decorative and functional whole.

Similarly the antibacterial quality that the new collection enjoys, guarantees optimal hygiene conditions in the daily use of the product.



Click Here To View  
Brochure



Sample Binder  
Available



Edgebanding



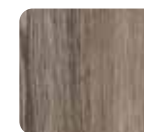
Laminated Samples  
Available



#### 3 of 30 Colors Stocked by Rugby



Zenit Panel  
Magnolia



Synchron Panel  
Café



Synchron Panel  
Espresso





# When You Need Cabinets, You Need Rugby!



Count on Rugby to deliver precisely engineered cabinets with your choice of traditional or contemporary door styles along with an extensive assortment of accessories. All our products are engineered from high quality materials and backed by comprehensive product warranties.

- Over 1000 different cabinet accessory options
- Both contemporary and traditional door styles

You provide the space, and we'll provide all the cabinet and accessory solutions you need to get the job done right.

[Click Here To View Brochure](#)

## With Rugby, you will get many benefits:

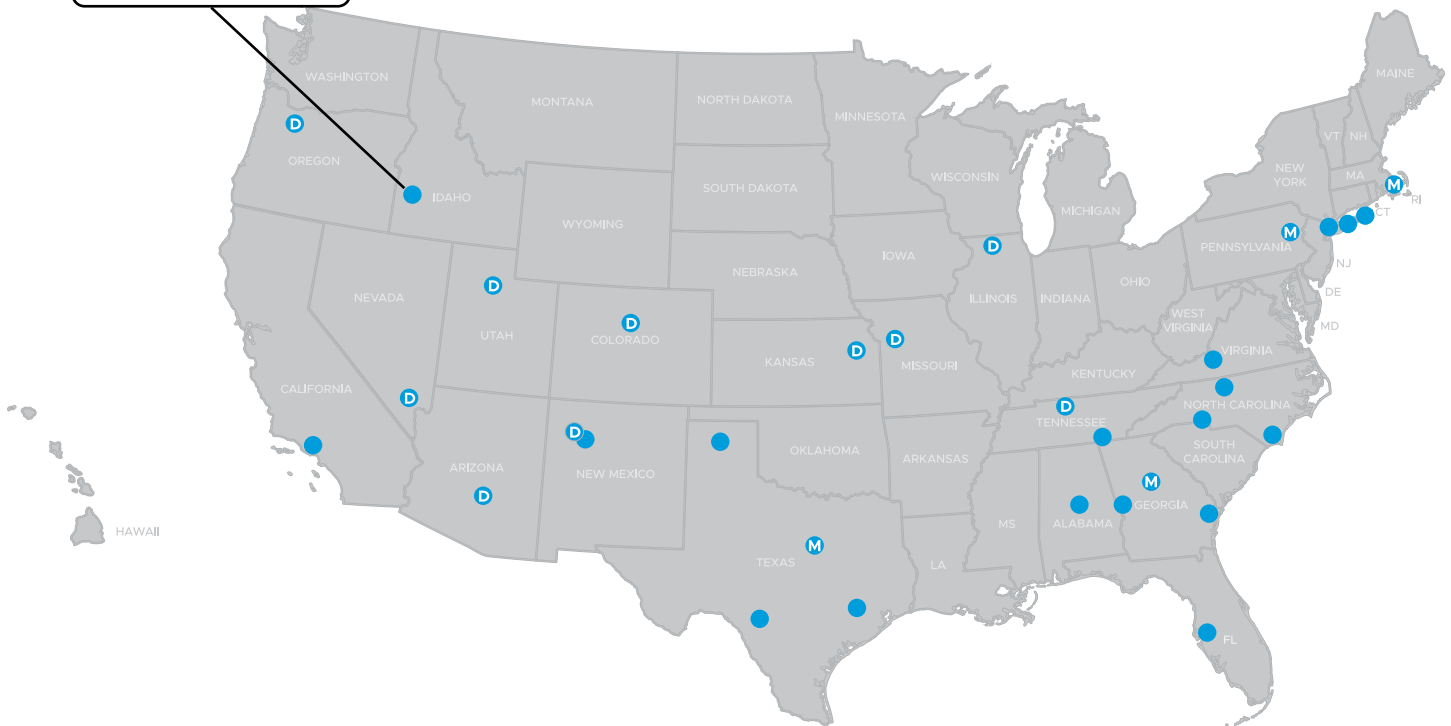
- Classic construction (glued, screwed, and stapled)
- Solid wood doors and drawers
- Finish consistency – 40% more paint on the product
- Custom paint program
- Modifications available
- Quality at a great value
- 5-year warranty
- Doors and colors on trend options
- Vanity offerings
- True margins - steady cost
- Quick turnaround - flat packed 3 days
- Assembled - 10-14 days
- Quick turnaround = faster paydays
- Land more jobs
- Add more areas to your existing custom jobs
- Elevate the line to semi-custom / higher price point job
- Working with a trusted partner - Rugby



# Servicing America

## BOISE, ID

12040 W. Executive Dr.  
Boise, ID 83713  
Phone: 208-336-3911  
Phone: 855-571-9663  
Fax: 208-345-8233



DOOR MANUFACTURING



MOULDING AND MILLWORK MANUFACTURING

Albuquerque, NM  
505-924-2270

Chattanooga, TN  
423-332-1377

Las Vegas, NV  
702-248-0050

Phoenix, AZ  
602-252-3696

Tampa, FL  
813-888-6824

Amarillo, TX  
806-352-2382

Columbus, GA  
706-565-5337

Los Angeles, CA  
909-466-7315

Portland, OR  
503-692-3322

Wilmington, NC  
910-794-7225

Atlanta, GA  
404-699-3900

Dallas, TX  
214-638-5161

Moonachie, NJ  
201-807-9701

Roanoke, VA  
540-857-0425

Birmingham, AL  
404-792-2290

Denver, CO  
303-296-7260

Nashville, TN  
615-885-0355

Rockford, IL  
815-965-9439

Blakeslee, PA  
570-646-6724

Houston, TX  
713-692-3388

Olathe, KS  
913-738-8074

Salt Lake City, UT  
801-972-9393

Boston Metro – Stoughton  
781-341-9255

Kansas City, MO  
816-531-0161

NY Metro – Bronx  
718-589-9700

San Antonio, TX  
210-657-5944

Charlotte, NC  
704-494-0703

Kernersville, NC  
336-993-8686

NY Metro – Long Island  
631-242-4369

Savannah, GA  
912-965-1061

**Rugby®**  
Architectural Building Products

Toll-Free: 1-855-650-3265

[www.rugbyabp.com](http://www.rugbyabp.com)