

**ALBUQUERQUE
AMARILLO**

RUGBY®
Architectural Building Products

NEW **FOR
2021**



ARCHITECTURAL SPECIALTY PRODUCTS
DECORATIVE SURFACING
ARCHITECTURAL MILLWORK
CABINET HARDWARE AND ADHESIVES

CATALOG

FIND OUT INSIDE



America's Leading Distributor

For over 20 years Rugby Architectural Building Products has been a market leader in Amarillo and the West Texas Area, where we are the primary source for hardwood plywood, lumber, TFL, solid surface and composite panel products.

WHY MAKE RUGBY YOUR SUPPLIER?

Rugby is Proven Reliability. Rugby is committed to fulfilling its promise to supply high quality products, competitively priced and delivered in a timely manner by industry professionals who know the value of exceptional service.

FRONT COVER IMAGE:
Supplier: Arauco Prism TFL
Product: Bergen Ash WF450
Project: Kitchen Cabinets and Wall



CONTENTS

Pionite: High Pressure Laminates 4

Nevamar: High Pressure Laminates 5

Staron: Solid Surface 6

Staron: Sinks & Bowls 7

FGV: Drawer Slides and Hinges 8

CMT Orange Tools: Saw Blades and Router Bits 9

Salice: Drawer Slides and Hinges. 10

Grass: Hardware 11

Famowood: Wood Filler 11

Uneeda and Deerwood Fasteners: Hardware 12

Titebond and Hybond: Adhesives 13

Rugby Custom Panel Division 14

Veneer Tech: Hardwood Veneers and Edgebanding. 15

Arauco Prism: TFL 16

Arauco Duraflake / Arauco Trupan 17

Glacier Green / Columbia Forest Products / Roseburg. 18

Baltic Birch and West Wood Products: Hardwood Plywood. 19

StyleLite: High Gloss and Matte Panels / Timber Products Company. 20

John Boos: Countertop / Wood Welded 21

PE Reflekt: High Gloss Acrylic 22

PE Ultramatte / Roucke HD 23

Milaminetex: Traditional Line 24

Milaminetex: Textures. 25

Wide Selection of Mouldings 26

Domestic Species: Hardwood. 26

Domestic Species: Softwood 27



The mark of responsible forestry

Look for FSC® Certified Products





PIONITE®

SURFACE SYSTEMS

possibilities
Bringing more to the surface.

Pionite® High Pressure Laminates come in a vast array of colors, wood grains, abstracts, finishes and custom prints making this an ideal surface for almost any horizontal or vertical application. Their extensive palette, quality manufacturing standards and innovative style makes it the first choice for many designers when specifying for a project. Having over a dozen specialty products and treatments, you'll find the exact material to match your environment's needs. With Pionite® HPL, the possibilities are virtually endless.

HPL is composed of layers of kraft paper, a single layer of decorative paper with a solid color or design, and finished with a protective layer that can have printed design accents or other decorative features.

- Available for countertops, vanities, cabinets, store fixtures, furniture, and post-forming application and much more
- Many choices available: 78 abstracts, 43 solid colors, 59 wood grains, 30 stones, over 20 finishes



[Click Here To View Brochure](#)



panoram™
SURFACE SYSTEMS BRANDS



CONOLITE®
AIRCRAFT LAMINATES

FRP
FIBERGLASS
REINFORCED PLASTICS

FRL
FIBER REINFORCED
LAMINATES



One system. Multiple surfaces. Amazing possibilities.

With the introduction of the Modern Odyssey Collection™, Nevamar® continues its long-standing tradition of design and technical innovation featuring a broad selection of quality products. Today, our High Pressure Laminates (HPL) are more versatile than ever, with more design-forward patterns, accent colors, and finishes than ever before. Simply look at what we offer among our specialty laminates and you will know exactly what we mean.

The new Modern Odyssey Collection™ from Nevamar offers an exceptional design palette to create spaces that inspire individuals and the environments they create. The rich color tones, realistic finishes, warm woodgrains, and eclectic abstracts combine contemporary aesthetics with an inviting sense of nature. Whether your inspiration is derived from wooded trails or urban landscapes, the Modern Odyssey Collection™ is a compass for your journey and your guide to mindfulness in the “here and now.”

Nevamar® high pressure laminates are available in 22 different finishes designed to enhance the look and texture of any project.

No matter which pattern you choose, Nevamar makes your laminate green!

- Nevamar's low emission products are GREENGUARD® certified
- By formulating our own resins, we can assure you of an eco-conscious manufacturing process.
- Nevamar® laminates are easy to clean without using harsh chemicals
- Our products are manufactured with kraft and decorative paper from recycled or renewable sources to help preserve our forests and promote a healthier environment
- Distribution centers are strategically located across the country to reduce the use of fossil fuels when delivering Nevamar products

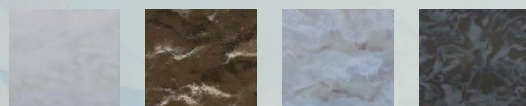


[Click Here To View Brochure](#)





4 of the 90 Colors Stocked by Rugby



Cloudbank

Loam

Ocean View

Presto

staron®

100% Acrylic Solid Surface

Staron high-performance acrylic solid surface is known for excellent workability and easy maintenance. Its homogenous, color-through composition is non-porous and ultra-hygienic, making Staron an ideal surfacing option for a wide range of commercial interior applications and residential spaces.

- 10-year limited commercial warranty
- Ultra hygienic / non-porous
- Thermo-formable
- 90 design inspired color options available
- Integrated sinks and bowls available. All ADA compliant
- Sample sets of Staron are available along with individual color samples



Click Here To View Brochure



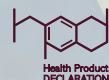
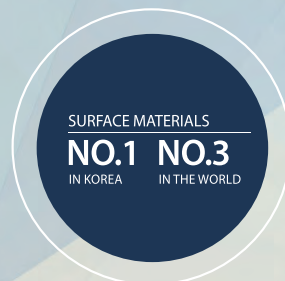
Click Here To View Brochure



Sample Binder Available



Samples Available



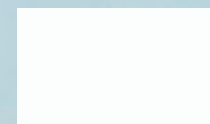
staron®

Sinks and Bowls

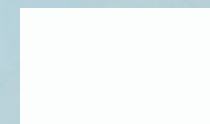
An integral sink will improve the efficiency and hygienic qualities of a kitchen or bath area and, particularly, interior commercial applications. Staron all-acrylic sinks and bowls are installed in combination with Staron sheet materials as part of a continuous surface featuring imperceptible seams for a perfect, uninterrupted fit. That also means there are no gaps or crevices for bacteria or mold to accumulate and grow. Whichever style you choose, Staron's non-porous, hygienic surfaces will always be easy to clean and maintain.

Choose from three coordinated sink color options from a collection of ten, popular models.

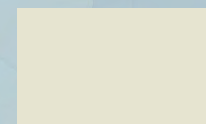
Available Colors



Bright White



Pearl



Ivory



Sink A1121



Sink A1131



Sink A1181



Sink A1231



Sink A2311



Sink A2321



Sink A2341



Bowl A3181



Bowl A3211



Bowl A3201





EXCEL utilizes SlowMotion damping technology for complete smoothness. With vertical adjustment on the drawer member, and lateral and in/out adjustment on the included front fixing brackets, accurate adjustments can be made to the drawer quickly and easily.



Drawer Slides



Drawer Hinges

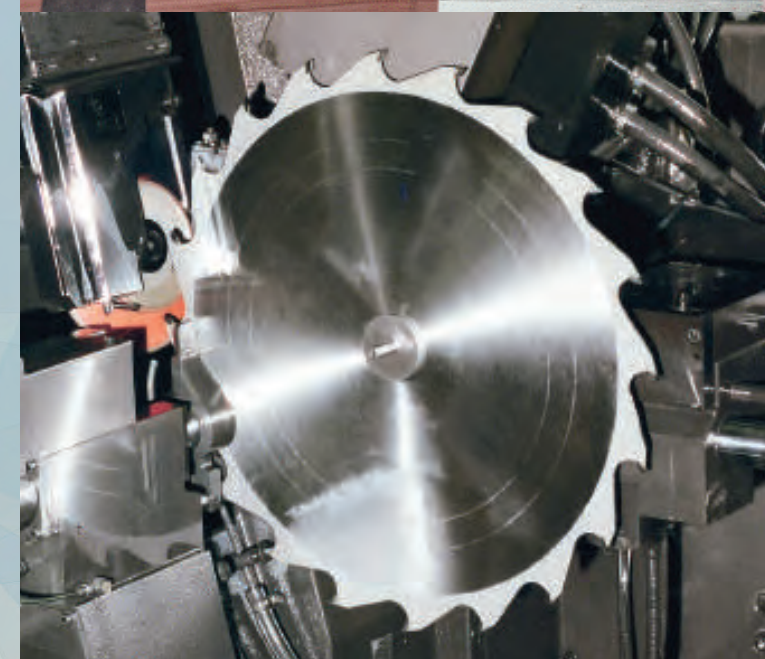


CMT offers a wide product range with over 7000 different standard tools, but that still isn't enough to achieve 100% customer satisfaction.

CMT factories worldwide are equipped with 20+ automated vertical storage systems programmed to expedite and simplify order and delivery. The tools you need are in-stock and ready for prompt shipment within 24 hours.



Click Here To View Brochure





SALICE

Established in 1989, Salice America reflects the leadership claimed by the European parent company for over 50 years.

A complete product line of concealed hinges, drawer slides and sliding door systems has made our company the technology leader of the market, a never ending task requiring solid engineering and innovative mentality.

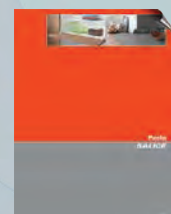
For every type of movement... the answer is Salice. A comprehensive range of products that combines excellence in research-based design and technical expertise to provide solutions for every domestic furniture application.



Silentia Hinges
[Click Here To View Brochure](#)



Futura Runners
[Click Here To View Brochure](#)



Pacta Hinge
[Click Here To View Brochure](#)



Wind Lift System
[Click Here To View Brochure](#)

G*GRASS

The GRASS brand stands for visionary development, top quality, technical precision, progressive design and exemplary protection of the environment. The GRASS Group has ranked among the world's leading developers and manufacturers of movement systems for over sixty years.

Our slide and hinge systems, as well as flap and corner cabinet systems, are distinct products that will bring kitchen and cabinet designs to life.

European hardware made in Germany and Austria.



[Click Here To View Brochure](#)

FAMOWOOD®

Wood Filler

FAMOWOOD Original Wood Filler has been the choice of professional woodworkers for over 70 years! It doesn't matter whether you are masking small or large defects, FAMOWOOD can handle the job. It spreads smoothly into cracks and holes, takes stains and paints evenly and resists cracking. Perfect for any type of custom wood project.

- Dries in 30 minutes
- Won't crack or shrink
- Can be sanded, drilled or planed
- Stainable and paintable
- Easy-to-use – no mixing required





For the past 50 years, Uneeda has been committed to provide the highest quality coated abrasives on the market.

Uneeda's coated abrasives are used by many of the leading manufacturers and refinishers of wood flooring.

Our wide assortment of narrow and wide belts features an aluminum oxide grain in grits ranging from P40 to P400.

Our sanding sheet option includes an aluminum oxide grain with a film back, in grits from P80 to P1200.



[Click Here To View Brochure](#)



Deerwood Fasteners™ is a leading supplier of High Quality Fasteners manufactured exclusively for woodworking applications. We service our nationwide customer base from our headquarters in Conover, NC and a regional warehouse in California.

Our products include Hinge and Hardware screws in a variety of finishes, Zip Drivers (Self drilling, Self-Counter sinking assembly screws), Painted Head Cabinet Installation screws, Decking screws, Face Frame screws, Drawer Front Adjuster Screws and much, much more.



Rugby is a full line distributor of all Titebond & Franklin products. Titebond I, II & III Wood Glue, Color matched caulking, Heavy Duty Construction Adhesive, Fast Set Polyurethane Construction Adhesive, FRP Solvent Free Adhesive, Weather Master Sealants, Ultimate MP, Silicones.



[Click Here To View Brochure](#)



C:B CHOICE BRANDS
ADHESIVES

Hybond

High-performance glues and adhesives for all occasions

Hybond H6-12 / HY-12R

A high performance, long open time spray grade contact adhesive. It is ideal for shops needing long open time and aggressive bond strength. Available in natural and red. The Hybond HY-12 / HY-12R is Leed Compliant (EQ 4.4 – No urea Formaldehyde Added).

Hybond CF-23 / CF-23G / CF-23R

The industry standard “best in class” canister in the market. It has the highest bond strength and heat resistance of any canister or bulk adhesive. Sold in canister. Available in natural, green and red. The Hybond CF-23 / CF-23G / CF-23R is Leed Compliant (EQ 4.4 – No urea Formaldehyde Added).





RUGBY CUSTOM PANEL DIVISION

High Pressure Laminate Panels
Custom Made to Your Specifications

RUGBY HPL PANELS

- In-house high-pressure lamination line
- Most all brands of HPL and Metals
- Large variety of substrates and specialty core materials
- Press capability up to 5'x12'
- Thicknesses from 1/4" to 3"
- Quick lead times. No minimums
- All panels are cleaned and trim routed
- Environmentally friendly water-based PVA adhesives
- FSC® certified panels are available
- Special thicknesses can be manufactured to your specifications
- Experienced and knowledgeable industry leading personnel

**CHOOSE RUGBY TO SAVE YOU
TIME AND MONEY ON YOUR
CUSTOM HPL PANELS!**



CUSTOM PLYWOOD PANELS

- Plywood panels custom made to your specifications
- Domestic and exotic wood veneer species available
- Large variety of substrate core materials
- Available in many thicknesses and sizes
- Custom configurations, cuts, machining and finishing options
- Quality domestic manufacturing
- Excellent lead times. No minimums.



Premium Hardwood Sheet Veneer & Edgebanding

Veneer Technologies, Inc. manufactures high end decorative hardwood veneer faces. They carry most domestic species and have access to many exotic species from around the world. They currently operate ten continuous cross feed splicers, producing approximately 6.5 million finished square feet of face veneer per month.

SHEET VENEER

Manufactured with a select grade face veneer crosslinked to a variety of backers. Backers include 10 mil, 20 mil, 2-ply with cross-grain back, 3M peel-n-stick, polyback, true phenolic. Sizes are 4' x 8', 4' x 10', 4' x 12'.

Custom sizes available.

WOOD EDGEBANDING

- Standard wood edgebanding
- 500' rolls, fleeced and sanded
- 250' rolls, preglued EVA hotmelt
- 3M peel-n-stick
- UV prefinished, preglued or fleece backed
- Widths 1/2" to 2"
- Custom widths and lengths available

THICK WOOD EDGE ROLLS

- 328' rolls. Thickness 1mm, 1.5mm, 2mm, and 3mm

Please inquire about available widths and species



Click Here To View
Brochure



Sample Binder
Available



Laminated Samples
Available



Most Domestic and Many Exotic Species Available



Design: Nordica
Texture: Velvet



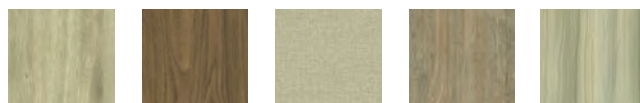
Design: Fiero Oak
Texture: Boreal



InCopper™ antimicrobial technology



9 of the 80 Available Designs



Burlap

Chique

Natural Linen

Toasted Oak

Sarek Ash



Luxent



Bergen Ash



Narvik Ash



Sahalie Pine



NEW
2020-2021
COLLECTION
16 NEW TFL DESIGNS



Click Here To View Brochure



Matching Edgebanding

arauco PRISM

TFL | Thermally Fused Laminate

PRISM is a colorful laminate brand that has real character with a designer-friendly focus.

Our Exclusive Collection, targeting commercial and residential applications, consists of over 80 designs (Woodgrains, Abstracts and Specialty Solids) available only from PRISM.

2 New Textures – Boreal and Velvet

Boreal is a tactile, striated texture that invites adventure and limitless design possibilities. Velvet offers a warm touch to surfaces. The smooth, matte texture amps up sophistication in woodgrain and solid designs.

Industry-first InCopper™ Antimicrobial Technology

This proprietary technology incorporated in all Prism TFL exclusive designs, protects the surface of the panel, actively inhibiting the growth of microorganisms that cause deterioration, stains or degradation.

arauco DURAFLAKE

Duraflake is the particleboard specialist with a wide variety of custom engineered grades to fit specific market needs.

Manufactured in Albany, OR predominantly with Douglas fir, a material that is known for strength and stability, the Duraflake particleboard brand is renowned for its specialty grade offerings. Each panel is engineered to perform in a host of applications such as, cabinets, countertops, shelving, store fixtures, office furniture and door components.



Click Here To View Brochure

arauco Trupan

Manufactured in Eugene, OR, Trupan MDF is available in a variety of specialty grades including Plus, Vesta ULEF MR10, Vesta NAF MR50, HD, and FSC® certified. An advanced refining process ensures a homogenous panel that is ideal for deep detailed profiling and finishing with exceptional performance results.



Trupan
Standard
Brochure

Click Here To View Brochure



Trupan
High Density
Brochure

Click Here To View Brochure



Trupan
VESTA NAF
Brochure

Click Here To View Brochure



Trupan
Moisture Resistant
Brochure

Click Here To View Brochure





When it comes to value, what really counts is not how much the MDF costs, but how much it costs to use.

WEYERHAEUSER GLACIER GREEN™ HIGH DENSITY MACHINING GRADE IS IDEAL

- Thermo-Foil Lamination
- Heat/UV-Cured Dry Coatings
- Water & Solvent-Based Paints
- Thickness 0.375" – 1.00"



[Click Here To View Brochure](#)



- PBC, MDF, and a VC made from finest Aspen Core
- Oversized available 5' x 8', 4' x 10', and 5' x 10'
- UV capabilities



[Click Here To View Brochure](#)



Whether you are designing furniture, commercial fixtures or cabinets, you can count on Duramine® to offer great looks and proven value. Our broad selection of rich woodgrains, contemporary abstracts, solid colors and fine textures offer everything you need to design and manufacture extraordinary finished products.



[Click Here To View Brochure](#)



Edgebanding



HARDWOOD PLYWOOD

- Direct importer - more choices and better quality control
- 3.0mm through 25.0mm
- 5' x 5', 4' x 8', 10' x 4' and 8' x 4' cross grain
- Grades from C/C through B/B
- NAUF, Exterior and Clear Finished
- Custom sizes and grades available
- Laminating blanks
- FSC® options available



[Click Here To View Brochure](#)



BALTIC BIRCH



UV Finished Hardwood Plywood Panels

- Panels are finished on our state of the art UV line, utilizing our TuffCoat UV (patent pending) finishing system
- Our UV line can accommodate panels up to 5' wide and 10' long and 1-1/2" thick
- Our UV finish is durable, cost effective and environmentally friendly, with virtually no emissions
- Birch, Maple, Oak, Alder, Cherry, Beech & many other species in stock
- Wide variety of grades and cores available
- We offer clear finish in different gloss levels, custom tinted finish, and graphic friendly finish
- Available substrates include FSC®, NAUF, NAF and CARB II
- The panels are used for Kitchen & Bathroom cabinets, Drawer components, shelving, doorskins, store fixtures, displays and many other applications
- Cut to size and edge finishing available
- Custom drawer size programs available





StyleLite®

The Ultimate High Gloss and Matte Panel System

Manufactured using world class co-extrusion technology and polyurethane reactive resins, Stylelite possess an optical grade finish suitable for any residential, retail, commercial, cultural or institutional project where a ripple free, highly durable and easy to maintain contemporary finish is desired.



Edgebanding

- Won't chip, crack, peel, flake or delaminate
- Perfectly balanced
- Highest workability in category
- Easily thermoformable for near-seamless installation
- Robust color range available in different cores, lengths & thicknesses
- UV & color change protected
- 7-10 Year Warranty
- Generally repairable if lightly or moderately scratched saving time, money and inconvenience



Click Here To View Brochure

Timber Products Company

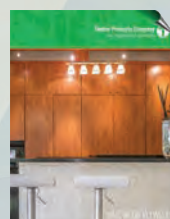
THE TREMENDOUS RESOURCE®

Carefully engineered for beauty and quality

We're proud manufacturers of hardwood plywood unrivaled in quality and environmental responsibility.

We offer a full range of hardwood veneer species in a variety of grades and core options, including exotic veneers in any order quantity.

Our hardwood plywood is environmentally certified and meets the strictest emission requirements in North America.



Click Here To View Brochure



John
BOOS
Since 1887

BUTCHER BLOCK COUNTERTOP

Boos® butcher block surfaces fill your kitchen with timeless tradition in countertop appearance while maintaining a natural food safe element for food preparation. Countertops are manufactured with full length continuous rails.

END GRAIN COUNTERTOPS

Easy on the eye, easy on the knife - Boos® end grain island tops are manufactured in a vertically glued "checkerboard" lay-up. This unique island top offering reveals the best of the natural elements in hardwood grain.



Click Here To View Brochure



At the Wood Welded® Companies, we build the world's best hardwood butcher block. From stunning kitchen countertops to safe and sensible food prep surfaces for culinary professionals to sturdy industrial workbench tops — discover why wood just works.



Click Here To View Brochure





PE | PREMIEREUROCASE

Premier Eurocase, Inc. supplies building components and fixtures. The company specializes in the construction of retail store fixtures and components for the woodworking industry.

Reflekt

Reflekt is a breakthrough high-gloss acrylic with several innovative product qualities:

- The most scratch resistant high-gloss acrylic in the market
- Impeccable surface consistency due to cleanroom lamination
- Color richness that enhances depth and clarity

Reflekt panels consist of a premium quality MDF substrate with a co-extruded polymer high-gloss acrylic top layer. The core material is carefully selected by Premier to have low surface variance, so the Reflekt surface is not flawed by substrate imperfections.

The panels are PUR (polyurethane) laminated inside a Class-100 (ISO 5) cleanroom, which is a manufacturing process that guarantees Reflekt is as close to a perfect product as technologically possible.

Our standard panel size is 4' x 8' available in 1/4" and 3/4" thicknesses. Custom thicknesses are available by request.

Reflekt is suitable for interior vertical surfaces such as kitchen cabinets, vanities, closets, furniture, as well as store fixtures & displays.



[Click Here To View Brochure](#)

UltraMatte

Incredibly smooth and soft to the touch, the enhanced surface properties make UltraMatte acrylic beautiful and functional.

- Top hardcoat protected for excellent scratch resistance
- Color richness and UV stabilized
- Anti-Fingerprint properties

UltraMatte panels consist of a premium quality MDF substrate with a co-extruded polymer acrylic top layer. The core material is carefully selected by Premier to have low surface variance, so the surface is not flawed by substrate imperfections.

The panels are PUR (polyurethane) laminated inside a Class-100 (ISO 5) cleanroom.

UltraMatte panels are available in 7 different colors options. Our standard panel size is 4' x 8' available in 1/4" and 3/4" thicknesses.

UltraMatte is suitable for interior vertical surfaces such as kitchen cabinets, vanities, closets, furniture, as well as store fixtures and displays.



[Click Here To View Brochure](#)

Roücke HD

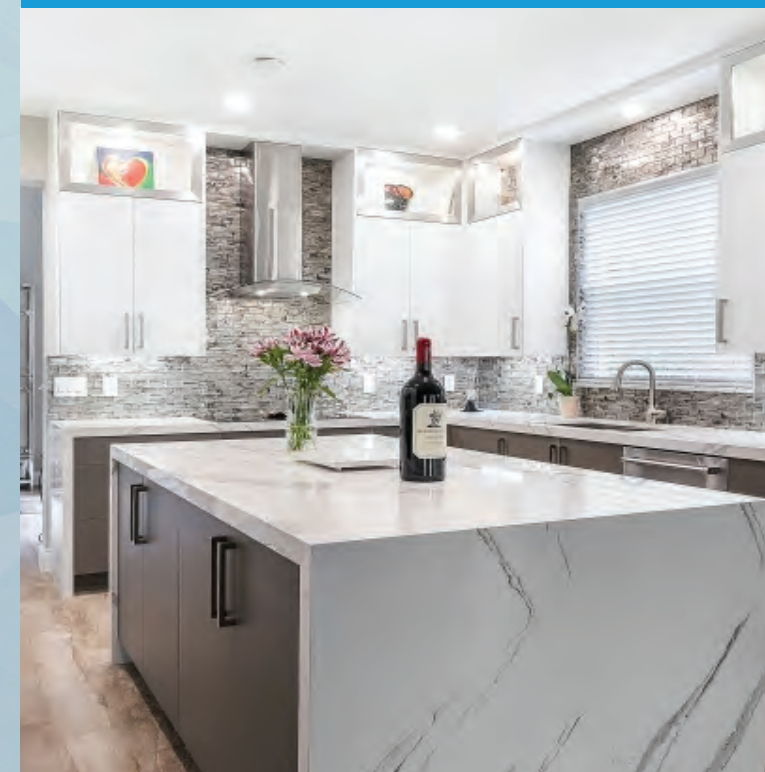
Premier EuroCase offers high-definition structured melamine panels with European trend-setting designs. HD structured panels deliver the look and feel of real wood along with the durability and reliability you've come to expect from PE panels.

The product can be sold in fully laminated 4' x 8' sheets, 1/4" or 3/4" thick.

Other thicknesses are available by request.



[Click Here To View Brochure](#)





MELAMINETEX

DECORATIVE BOARD

Traditional line

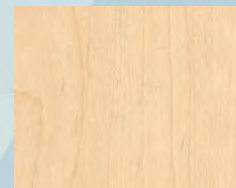
Designed to provide a mixture of warm colors of wood and solid colors, to dress warmly and design the environments according to the taste of each client. All our traditional line can be applied to any of our textures, obtaining a wide variety of melamine models.

Brochure



[Click Here To View Brochure](#)

Woodgrain Colors



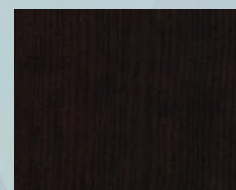
Sweet Maple



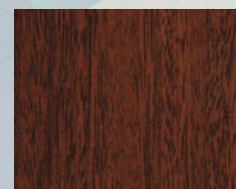
Solid Maple



Fresh Walnut

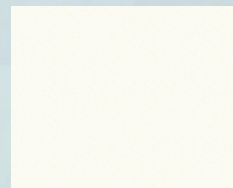


Mambo Pine

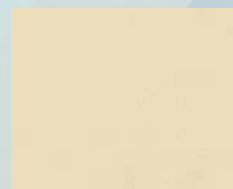


Mahogany Tex

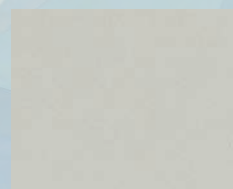
Solid Colors



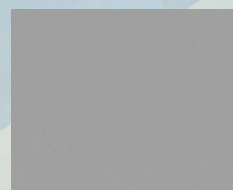
White Tex



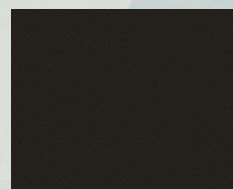
Almond Light



Soft Grey



Dark Grey



Black Tex



MELAMINETEX

DECORATIVE BOARD

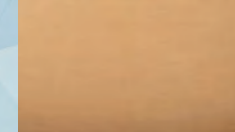
Textures

All our textures complement our traditional portfolio (wood and solid), generating new appearances and aesthetics to each one of its environments, kitchens, offices and other areas, guaranteeing spaces adapted to the most avant-garde decoration trends.

C-Carved Vein



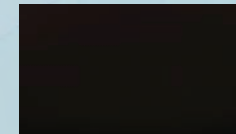
Sweet Maple



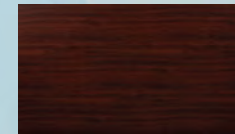
Solid Maple



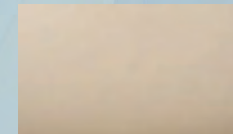
Fresh Walnut



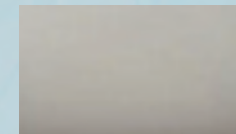
Mambo Pine



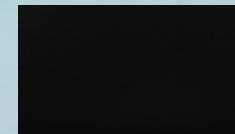
Mahogany Tex



Almond Light

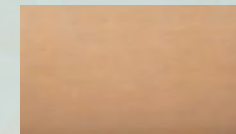


Soft Grey

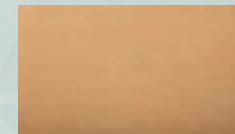


Black Tex

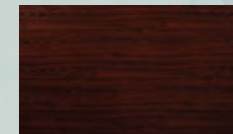
N-Natural Vein



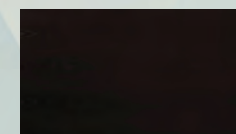
Sweet Maple



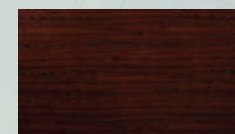
Solid Maple



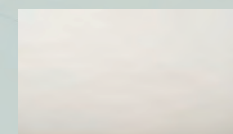
Fresh Walnut



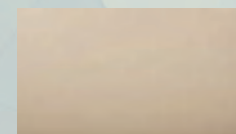
Mambo Pine



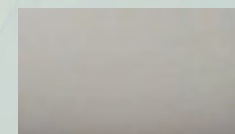
Mahogany Tex



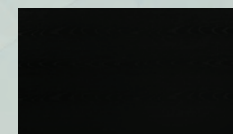
White Tex



Almond Light



Soft Grey

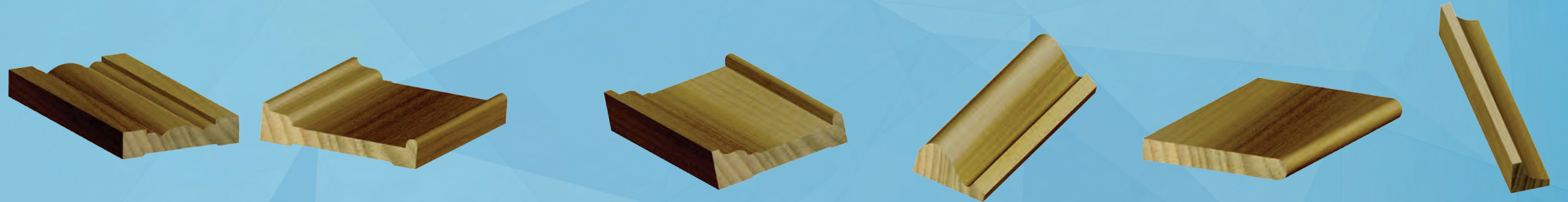


Black Tex



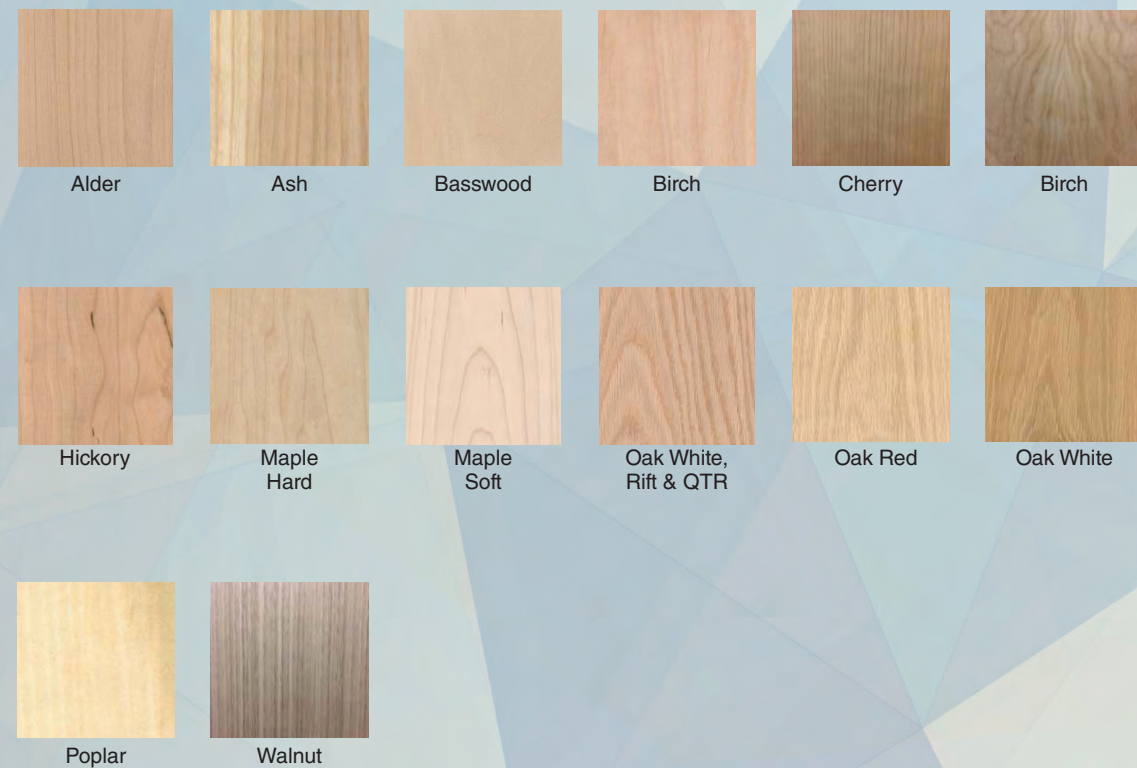
WIDE SELECTION OF MOULDINGS

*Over 3,000 Profiles Available
For Any Task At Hand*



DOMESTIC SPECIES: HARDWOOD

- 4/4 through 8/4. All lengths and grades
- S2S, SL1E and ripping available
- Width sorted Red Oak, Hard Maple, and Poplar
- S4S, Sanding and Custom millwork packages including custom knife grinding available



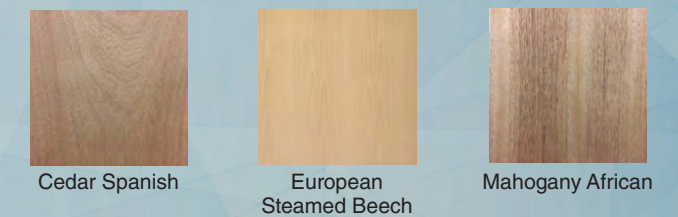
DOMESTIC SOFTWOOD AND IMPORTED SPECIES

A comprehensive assortment of Domestic and Imported Options

DOMESTIC SPECIES: SOFTWOOD



IMPORTED SPECIES



For your worldwide import sourcing needs, including the highest quality mills in Africa and South America. To ensure prompt supply of exotics and imports, Hardwoods import consolidation yard is located in Leland, North Carolina.

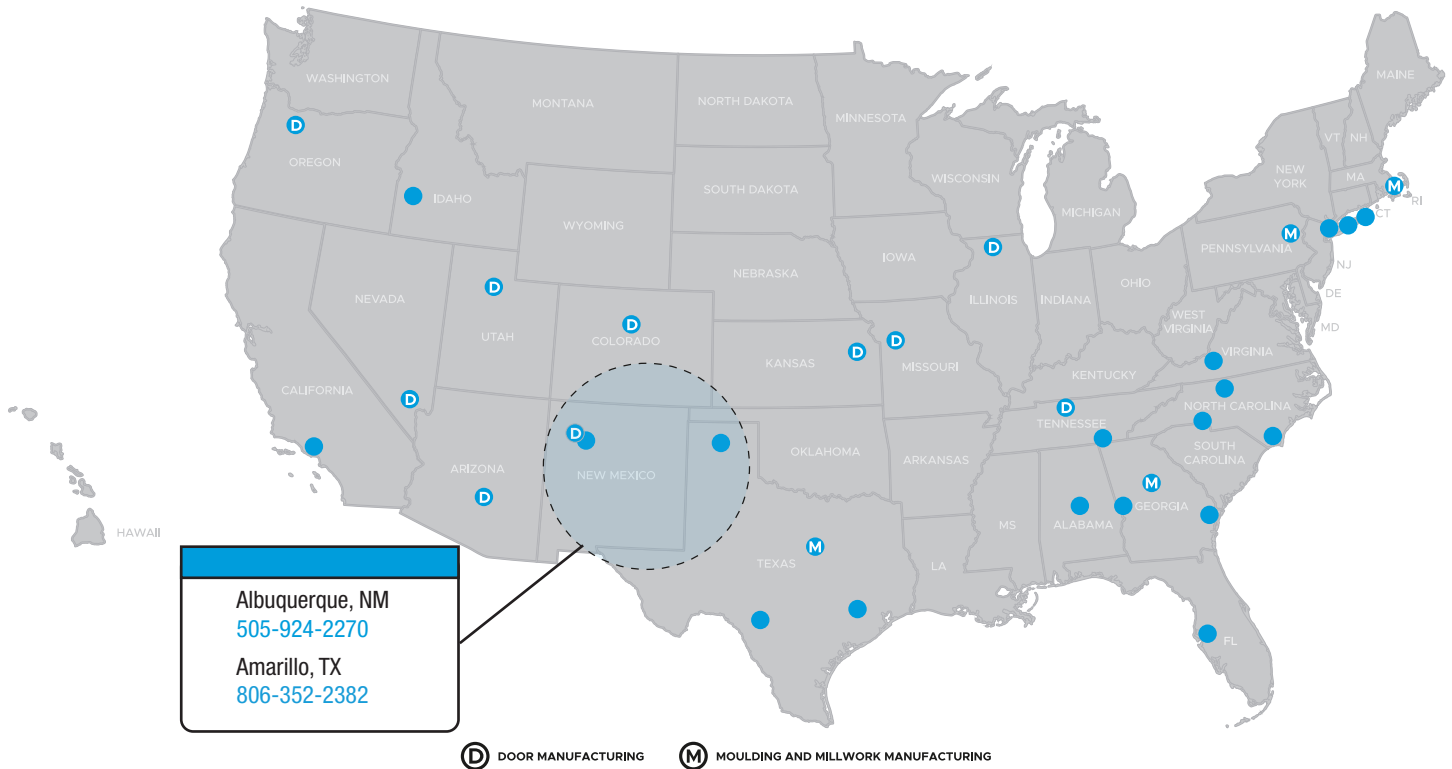
Trestlewood®
Quality Reclaimed Wood Products

Trestlewood specializes in beautiful, distinctive wood with a history. Major product lines include antique wood flooring, reclaimed timbers and beams (hand-hewn, weathered or resawn), barnwood siding, reclaimed lumber and reclaimed wood mantels.

Trestlewood also offers NatureAged, Harbor Fir and other product lines that are manufactured from new lumber to provide a reclaimed wood look and many of the other advantages of antique wood products. These manufactured products can provide attractive alternatives or supplements to reclaimed lumber, flooring and timber products.

Trestlewood reclaimed wood products have been used 47 of 50 US states and several other countries.

Servicing America



Atlanta, GA
404-699-3900

Columbus, GA
706-565-5337

Los Angeles, CA
909-466-7315

Portland, OR
503-692-3322

Wilmington, NC
910-794-7225

Birmingham, AL
404-792-2290

Dallas, TX
214-638-5161

Moonachie, NJ
201-807-9701

Roanoke, VA
540-857-0425

Blakeslee, PA
570-646-6724

Denver, CO
303-296-7260

Nashville, TN
615-885-0355

Rockford, IL
815-965-9439

Boise, ID
208-336-3911

Houston, TX
713-692-3388

Olathe, KS
913-738-8074

Salt Lake City, UT
801-972-9393

Boston Metro – Stoughton
781-341-9255

Kansas City, MO
816-531-0161

NY Metro – Bronx
718-589-9700

San Antonio, TX
210-657-5944

Charlotte, NC
704-494-0703

Kernersville, NC
336-993-8686

NY Metro – Long Island
631-242-4369

Savannah, GA
912-965-1061

Chattanooga, TN
423-332-1377

Las Vegas, NV
702-248-0050

Phoenix, AZ
602-252-3696

Tampa, FL
813-888-6824

Rugby®
Architectural Building Products

Toll-Free: 1-855-650-3265

www.rugbyabp.com